

## **Appendix D      EDR Report Executive Summary**

The full EDR Report is available for review at the City of Los Angeles Planning Department



**San Pedro NCP**  
Los Angeles, CA

Inquiry Number: 02976440.1r  
January 27, 2011

## EDR DataMap™ Environmental Atlas™

***Thank you for your business.***  
Please contact EDR at 1-800-352-0050  
with any questions or comments.

**Disclaimer - Copyright and Trademark Notice**

This Report contains certain information obtained from a variety of public and other sources reasonably available to Environmental Data Resources, Inc. It cannot be concluded from this Report that coverage information for the target and surrounding properties does not exist from other sources. **NO WARRANTY EXPRESSED OR IMPLIED, IS MADE WHATSOEVER IN CONNECTION WITH THIS REPORT. ENVIRONMENTAL DATA RESOURCES, INC. SPECIFICALLY DISCLAIMS THE MAKING OF ANY SUCH WARRANTIES, INCLUDING WITHOUT LIMITATION, MERCHANTABILITY OR FITNESS FOR A PARTICULAR USE OR PURPOSE. ALL RISK IS ASSUMED BY THE USER. IN NO EVENT SHALL ENVIRONMENTAL DATA RESOURCES, INC. BE LIABLE TO ANYONE, WHETHER ARISING OUT OF ERRORS OR OMISSIONS, NEGLIGENCE, ACCIDENT OR ANY OTHER CAUSE, FOR ANY LOSS OF DAMAGE, INCLUDING, WITHOUT LIMITATION, SPECIAL, INCIDENTAL, CONSEQUENTIAL, OR EXEMPLARY DAMAGES. ANY LIABILITY ON THE PART OF ENVIRONMENTAL DATA RESOURCES, INC. IS STRICTLY LIMITED TO A REFUND OF THE AMOUNT PAID FOR THIS REPORT.** Purchaser accepts this Report "AS IS". Any analyses, estimates, ratings, environmental risk levels or risk codes provided in this Report are provided for illustrative purposes only, and are not intended to provide, nor should they be interpreted as providing any facts regarding, or prediction or forecast of, any environmental risk for any property. Only a Phase I Environmental Site Assessment performed by an environmental professional can provide information regarding the environmental risk for any property. Additionally, the information provided in this Report is not to be construed as legal advice.

Copyright 2006 by Environmental Data Resources, Inc. All rights reserved. Reproduction in any media or format, in whole or in part, of any report or map of Environmental Data Resources, Inc., or its affiliates, is prohibited without prior written permission.

EDR and its logos (including Sanborn and Sanborn Map) are trademarks of Environmental Data Resources, Inc. or its affiliates. All other trademarks used herein are the property of their respective owners.

FOCUS MAP SUMMARY

<u>Database</u>	<u>Total Plotted</u>
<b><u>FEDERAL RECORDS</u></b>	
NPL	0
Proposed NPL	0
Delisted NPL	0
NPL LIENS	0
CERCLIS	0
CERC-NFRAP	2
LIENS 2	0
CORRACTS	0
RCRA-TSDF	1
RCRA-LQG	17
RCRA-SQG	117
RCRA-CESQG	0
RCRA-NonGen	12
US ENG CONTROLS	0
US INST CONTROL	0
ERNS	127
HMIRS	6
DOT OPS	7
US CDL	0
US BROWNFIELDS	1
DOD	1
FUDS	1
LUCIS	0
CONSENT	0
ROD	0
UMTRA	0
ODI	0
DEBRIS REGION 9	0
MINES	0
TRIS	0
TSCA	2
FTTS	5
HIST FTTS	4
SSTS	0
ICIS	0
PADS	0
MLTS	0
RADINFO	0
FINDS	171
RAATS	1
SCRD DRYCLEANERS	0
COAL ASH EPA	0
PCB TRANSFORMER	0
COAL ASH DOE	0
FEDERAL FACILITY	0
FEMA UST	0
US HIST CDL	0
<b><u>STATE AND LOCAL RECORDS</u></b>	
HIST Cal-Sites	1

## FOCUS MAP SUMMARY

<u>Database</u>	<u>Total Plotted</u>
CA BOND EXP. PLAN	1
SCH	3
Toxic Pits	0
SWF/LF	2
WDS	11
NPDES	19
WMUDS/SWAT	1
Cortese	2
HIST CORTESE	36
SWRCY	4
LUST	51
CA FID UST	109
SLIC	13
UST	44
HIST UST	79
LIENS	0
SWEEPS UST	96
CHMIRS	46
LDS	0
MCS	0
AST	0
Notify 65	1
DEED	2
VCP	4
DRYCLEANERS	28
WIP	0
CDL	9
RESPONSE	3
HAZNET	462
EMI	77
ENVIROSTOR	20
HAULERS	1
FINANCIAL ASSURANCE	0
HWT	2
HWP	1
MWMP	0
PROC	0
 <b><u>TRIBAL RECORDS</u></b>	
INDIAN RESERV	0
INDIAN ODI	0
INDIAN LUST	0
INDIAN UST	0
INDIAN VCP	0
 <b><u>EDR PROPRIETARY RECORDS</u></b>	
Manufactured Gas Plants	1

**NOTES:**

Sites may be listed in more than one database

# EXECUTIVE SUMMARY

## TARGET PROPERTY INFORMATION

### ADDRESS

LOS ANGELES, CA  
LOS ANGELES, CA 90731

## DATABASES WITH NO MAPPED SITES

No mapped sites were found in EDR's search of available ("reasonably ascertainable ") government records within the requested search area for the following databases:

## FEDERAL RECORDS

NPL	National Priority List
Proposed NPL	Proposed National Priority List Sites
Delisted NPL	National Priority List Deletions
NPL LIENS	Federal Superfund Liens
CERCLIS	Comprehensive Environmental Response, Compensation, and Liability Information System
LIENS 2	CERCLA Lien Information
CORRACTS	Corrective Action Report
RCRA-CESQG	RCRA - Conditionally Exempt Small Quantity Generator
US ENG CONTROLS	Engineering Controls Sites List
US INST CONTROL	Sites with Institutional Controls
US CDL	Clandestine Drug Labs
LUCIS	Land Use Control Information System
CONSENT	Superfund (CERCLA) Consent Decrees
ROD	Records Of Decision
UMTRA	Uranium Mill Tailings Sites
ODI	Open Dump Inventory
DEBRIS REGION 9	Torres Martinez Reservation Illegal Dump Site Locations
MINES	Mines Master Index File
TRIS	Toxic Chemical Release Inventory System
SSTS	Section 7 Tracking Systems
ICIS	Integrated Compliance Information System
PADS	PCB Activity Database System
MLTS	Material Licensing Tracking System
RADINFO	Radiation Information Database
SCRD DRYCLEANERS	State Coalition for Remediation of Drycleaners Listing
COAL ASH EPA	Coal Combustion Residues Surface Impoundments List
PCB TRANSFORMER	PCB Transformer Registration Database
COAL ASH DOE	Sleam-Electric Plan Operation Data
FEDERAL FACILITY	Federal Facility Site Information listing
FEMA UST	Underground Storage Tank Listing
US HIST CDL	National Clandestine Laboratory Register

## STATE AND LOCAL RECORDS

Toxic Pits..... Toxic Pits Cleanup Act Sites

## EXECUTIVE SUMMARY

LIENS.....	Environmental Liens Listing
LDS.....	Land Disposal Sites Listing
MCS.....	Military Cleanup Sites Listing
AST.....	Aboveground Petroleum Storage Tank Facilities
WIP.....	Well Investigation Program Case List
FINANCIAL ASSURANCE.....	Financial Assurance Information Listing
MWMP.....	Medical Waste Management Program Listing
PROC.....	Certified Processors Database

### TRIBAL RECORDS

INDIAN RESERV.....	Indian Reservations
INDIAN ODI.....	Report on the Status of Open Dumps on Indian Lands
INDIAN LUST.....	Leaking Underground Storage Tanks on Indian Land
INDIAN UST.....	Underground Storage Tanks on Indian Land
INDIAN VCP.....	Voluntary Cleanup Priority Listing

### SURROUNDING SITES: SEARCH RESULTS

Surrounding sites were identified.

The Map ID column refers to the Map ID-Focus Map(s) of the listed site.

Sites listed in ***bold italics*** are in multiple databases.

Unmappable (orphan) sites are not considered in the foregoing analysis.

### FEDERAL RECORDS

CERC-NFRAP: Archived sites are sites that have been removed and archived from the inventory of CERCLIS sites. Archived status indicates that, to the best of EPA's knowledge, assessment at a site has been completed and that EPA has determined no further steps will be taken to list this site on the National Priorities List (NPL), unless information indicates this decision was not appropriate or other considerations require a recommendation for listing at a later time. This decision does not necessarily mean that there is no hazard associated with a given site; it only means that, based upon available information, the location is not judged to be a potential NPL site.

A review of the CERC-NFRAP list, as provided by EDR, and dated 06/23/2009 has revealed that there are 2 CERC-NFRAP sites within the searched area.

<u>Site</u>	<u>Address</u>	<u>Map ID</u>
<b><i>PLAZA AUTOMOTIVE CENTER</i></b>	<b><i>505 N PACIFIC AVE</i></b>	<b><i>107-6</i></b>
AUTO BODY SHOP	1505-1555 SOUTH PACIFIC	244-9

RCRA-TSDF: RCRAInfo is EPA's comprehensive information system, providing access to data supporting the Resource Conservation and Recovery Act (RCRA) of 1976 and the Hazardous and Solid Waste Amendments (HSWA) of 1984. The database includes selective information on sites which generate, transport, store, treat and/or dispose of hazardous waste as defined by the Resource Conservation and Recovery Act (RCRA). Transporters are individuals or entities that move hazardous waste from the generator offsite to a facility that can recycle, treat, store, or dispose of the waste. TSDFs treat, store, or dispose of the waste.

A review of the RCRA-TSDF list, as provided by EDR, and dated 02/17/2010 has revealed that there is 1



## EXECUTIVE SUMMARY

RCRA-TSDF site within the searched area.

<u>Site</u>	<u>Address</u>	<u>Map ID</u>
<b>WESTERN FUEL OIL CO</b>	<b>2100 N GAFFEY</b>	<b>22-5</b>

RCRA-LQG: RCRAInfo is EPA's comprehensive information system, providing access to data supporting the Resource Conservation and Recovery Act (RCRA) of 1976 and the Hazardous and Solid Waste Amendments (HSWA) of 1984. The database includes selective information on sites which generate, transport, store, treat and/or dispose of hazardous waste as defined by the Resource Conservation and Recovery Act (RCRA). Large quantity generators (LQGs) generate over 1,000 kilograms (kg) of hazardous waste, or over 1 kg of acutely hazardous waste per month.

A review of the RCRA-LQG list, as provided by EDR, and dated 02/17/2010 has revealed that there are 17 RCRA-LQG sites within the searched area.

<u>Site</u>	<u>Address</u>	<u>Map ID</u>
SAN PEDRO SCIENCE CENTER	2201 BARRYWOOD AVE	23-5
TAPER AVE ELEMENTARY SCHOOL	1824 TAPER AVE	36-5
<b>KMLT, LLC LOS ANGELES HARBOR T</b>	<b>2200 JOHN S GIBSON BLVD</b>	<b>54-6</b>
GAFFEY STREET YARD	1400 NORTH GAFFEY STREE	55-5,6
PIERSON PROPERTIES	790 WEST BASIN STREET	61-5
PARK WESTERN ELEMENTARY SCHOOL	1214 PARK WESTERN PL	78-5
LAUSD-CRESTWOOD STREET ELEMEN	1946 W. CRESTWOOD STREE	94-5
PORT OF LOS ANGELES	425 SO.PALOS VERDE ST.	155-9
<b>LAUSD--FIFTEENTH ST. ELEM</b>	<b>1527 S. MESA ST.</b>	<b>249-9</b>
WESTWAY TERMINAL COMPANY	2220 SIGNAL ST BERTHS 7	260-9
EXXONMOBIL OIL CORP	2490 S WESTERN AVE	298-12
<b>FORT MACARTHUR</b>	<b>2400 PACIFIC AVENUE</b>	<b>303-13</b>
<b>SOUTH REGION HIGH SCHOOL NO 15</b>	<b>3200 ALMA ST</b>	<b>328-12</b>
POINT FERMIN OUTDOOR EDUCATION	3220 ALMA ST	328-12
WHITE POINT ELEMENTARY SCHOOL	1410 SILVIUS AVE	329-12
LAUSD-WHITE POINT ELEMENTARY S	1410 SILVIUS AVENUE	329-12
SAN PEDRO WILM EEC	920 W 36TH ST BLDG 950	339-12

RCRA-SQG: RCRAInfo is EPA's comprehensive information system, providing access to data supporting the Resource Conservation and Recovery Act (RCRA) of 1976 and the Hazardous and Solid Waste Amendments (HSWA) of 1984. The database includes selective information on sites which generate, transport, store, treat and/or dispose of hazardous waste as defined by the Resource Conservation and Recovery Act (RCRA). Small quantity generators (SQGs) generate between 100 kg and 1,000 kg of hazardous waste per month.

A review of the RCRA-SQG list, as provided by EDR, and dated 02/17/2010 has revealed that there are 117 RCRA-SQG sites within the searched area.

<u>Site</u>	<u>Address</u>	<u>Map ID</u>
<b>TRANSIT CONTRACTS</b>	<b>221 MAR VISTA</b>	<b>2-3</b>
<b>SGS CONTROL SVCS</b>	<b>225 MARVISTA</b>	<b>2-3</b>
<b>LA BUNKER SURVEYORS</b>	<b>239 MAR CISTA AVE</b>	<b>4-3</b>
<b>LA PUMPIMG PLANT #77</b>	<b>1220 W B ST</b>	<b>6-3</b>
<b>THE HOME DEPOT NO 1005</b>	<b>2115 N GAFFEY ST</b>	<b>22-5</b>
<b>WASTE DISPOSAL SYSTEMS</b>	<b>2100 N GAFFEY ST</b>	<b>22-5</b>
<b>GARDEN VILLAGE CLEANERS</b>	<b>28144 S WESTERN AVE</b>	<b>28-5</b>
<b>BAY SHORES MEDICAL GRP</b>	<b>28633 S WESTERN AVE STE</b>	<b>31-5</b>

## EXECUTIVE SUMMARY

Site	Address	Map ID
ROCHE THOMAS CORPORATION	1921 N GAFFEY ST C	32-5
INTERSTATE BAKERIES CORP	1701 N GAFFEY	43-5,6
SO CAL GAS SAN PEDRO BASE	755 W CAPITAL DR	45-5
GOYA CLEANERS	28625 S WESTERN AVE	46-5
PPG GATX TERMINALS CORP	BERTH 70 71 SIGNAL ST	52-6
UNION CARBIDE CORP GATX TERM	C/O BERTH 70 & 71 SIGNA	52-6
KINDER MORGAN ENERGY PARTNERS	1363 N GAFFEY ST	55-5,6
ADVANCE GERMAN CAR	1303 N GAFFEY ST	59-5,6
ADVANCE AUTO	637 BATTERY ST	59-5,6
BAY AREA AUTO	751 BATTERY ST	59-5
LA HARBOR ANIMAL SHELTER	735 BATTERY ST	59-5
KRUPP MAK	729 BASIN ST	60-5
HILL SIDE CLEANERS	29117 S WESTERN AVE	64-5
AMERICAN PRESIDENT LINES LTD	BERTH 93A LOS ANGELES H	68-6
CHEVRON STATION NO 99747	1105 N GAFFEY ST	70-5,6
COLGRO PLATING	1006 N GAFFEY ST	77-5
WEST COAST AEROSPACE, INC	812 MIRAFLORES ST	77-5
ART YUNG DESIGNS INC	811 MIRAFLORES ST	77-5
MARTIN CHAS INSPECTOR & CONTRO	825 MIRA FLORES ST	77-5
MASTER CLEANERS	1018 N WESTERN AVE	79-5
SHELL STATION NO 204-6906-0105	900 N WESTERN	84-5
CHEVRON STATION 9 8987	29421 S WESTERN AVE	84-5
LA UNIFIED SCHOOL DISTRICT HAR	740 NORTH PACIFIC AVENU	86-6
WESTERN CLEANERS	29505 WESTERN AVE UNIT	92-5
CATALINA ISLAND CRUISES	BERTH 95	97-6
CHEVRON STATION NO 98649	40 MIRALESTE PLAZA	98-4
LOS ANGELES CRUISE SHIP TERMIN	BERTH 93C	99-6
PECK PARK REC CENTER	560 N WESTERN AVE	100-5
LA PUMPING PLANT #67	530 N HARBOR BLVD	102-6
PLAZA AUTOMOTIVE CENTER	505 N PACIFIC AVE	107-6
LA HARBOR FIRE ALARM HEADQUART	501 N MESA ST	111-6
LOS ANGELES USD BANDINI ELEM S	425 N BANDINI ST	112-5
LOS ANGELES USD BARTON HILL EL	423 N PACIFIC AVE	114-6,9
LA FIRE STATION 53	438 N MESA ST	115-6,9
SHELL SERVICE STATION	406 N GAFFEY	117-5,6,8,9
OVERSEAS SHIPPING CO	BERTH 228 D+E	119-6,9
ARCO BATTERY MFG CO	327 N HARBOR BLVD	123-6,9
OCEAN PARK CLEANERS	114 N GAFFEY ST UNIT C	132-8,9
CHEVRON STATION NO 98701	106 S GAFFEY ST	132-8,9
BILL SOUTH SERVICE	986 W FIRST ST	136-8
SHELL SERVICE STATION	987 W 1ST	136-8
HARBOR DISTRICT YARD	950 W 1ST ST	137-8
WORLD OIL CO	210 S GAFFEY	144-8,9
J&A CUSTOM COACH WORKS	239 SOUTH PACIFIC AVE	145-9
BP WEST COAST PRODUCTS LLC NO	302 S PACIFIC AVE	145-9
MIKES SERVICE	302 S PACIFIC	145-9
CROWLEY MARINE SERVICES INC	BERTH 86	147-9
E & R AUTO RPR	526 W 5TH ST	158-9
J & N DISCOUNT RADIATOR	500 S GAFFEY	159-8,9
REGAL CLEANERS	519 S GAFFEY ST	159-8,9
KWIK KOPY PRINTING 344	350 W 5TH ST SUITE 103	163-9
PACIFIC BELL	425 W 5TH ST	163-9
BIODIAGNOSTICS LABORATORY	1360 W 6TH ST	167-8
SMITH BROTHERS ENTERPRISE	1350 W 6TH ST STE 5	167-8
F WORKMON & A DELMON MD	1294 W 6TH ST 210	168-8
LESLIE J HARRIS MD	1294 W 6TH ST 205	168-8

## EXECUTIVE SUMMARY

Site	Address	Map ID
WALTERS VW REPAIR	678 W 6TH ST	169-8,9
M & M BODY WORKS INC	546 W 6TH STREET	171-9
LA MARITIME HISTORY MUSEUM	100 E 6TH ST	174-9
ADVERTISING INK	425 W 6TH ST	175-9
LA FIRE STATION 112	350 S SEASIDE AVE	176-9
LA SAN PEDRO MUNICIPAL BLDG	638 S BEACON ST	177-9
SAN PEDRO PENINSULA HOSPITAL	1300 W 7TH ST	185-8
GAFFEY CLEANERS	801 S GAFFEY ST	187-8,9
CABRILLO E S	732 S CABRILLO AVE	195-8
LA SAN PEDRO REGIONAL LIBRARY	931 S GAFFEY ST	216-8,9
PIERCE BROS GARAGE	481 10TH ST	217-9
JOE FURGEL AUTO PART & SERV IN	1106 SO GAFFEY ST	229-8,9
JOHNNYS CHEVRON	1306 S GAFFEY ST	238-8,9
LA PUMPING PLANT #81	0 BERTH 77	239-9
LA SEWER OFFICE BUILDING	1406 GAFFEY ST	243-8,9
PACIFIC BODY SHOP	1437 S PACIFIC AVE	244-9
CYCLE SERVICE	1503 S PACIFIC AVE	244-9
Y & S AUTO BODY SHOP	1553 S PACIFIC AVE	244-9
K & B MARINE SYSTEMS SVC	1600 S PACIFIC AVE	244-9
BIKE PALACE	1600 S PACIFIC AVE	244-9
PLAZA AUTO REPAIR	1610 S PACIFIC	244-9
SHELL SERVICE STATION 136043	1631 W PACIFIC	244-9
CENTURY MOTORCYCLES	1640 S PACIFIC	244-9
LAUSD-SAN PEDRO HIGH SCHOOL	1001 W 15TH ST	245-8
CHARLIES AUTO CTR	1637 S GAFFEY	253-8,9
CHARLIES MOBIL	1637 S GAFFEY ST	253-8,9
ARCO FACILITY NO 09606	1706 S GAFFEY ST	258-8,9
KINDER MORGAN LIQUIDS TERMINAL	2220 SIGNAL STREET, BER	260-9
BRITISH EUROPEAN AUTO REPAIR	1739 S GAFFEY	261-8,9
SOUTH BAY AURO BODY	1831 S PACIFIC	270-9
LA PUMPING PLANT #80	2185 SIGNAL	272-9
KINDER MORGAN LIQUIDS TERMINAL	220 EAST 22ND STREET	276-9
CELANESE CHEM CO INC	BERTH 70/71 SIGNAL ST	278-9,13
JOE & MIKE GOOD AUTO	2010 S PACIFIC AVE	279-9,13
LAUSD LELAND ELEM SCHOOL	2120 LELAND ST	286-8,12
ROBERT BORDEN DMD	2403 MORAY AVE	290-12
UNION OIL PIPELINE,HARBOR STAT	200 WEST 22ND ST	291-13
TURNVEYOR SVC CO	2309 W ADAMS	293-13
MARTY'S VILLAGE CLEANERS	2302 S WESTERN AVE	295-12
SOUTH BAY GLASSING	2234 S PACIFIC AVE	296-13
CHEVRON STATION NO 97864	1660 W 25TH ST	298-12
LUCKY CLEANERS	1609 W 25TH STREET	298-12
EXXONMOBIL OIL CORPORATION 131	2490 S WESTERN AVE	298-12
PACIFIC VIEW DRY CLEANERS	1438 W 25TH ST	307-12
LA FIRE STATION 101	1414 W 25TH ST	309-12
ANDYS PAINTING CO	1037 W 25TH ST NO 4	311-12
SAN PEDRO BOAT WORKS	BERTH 44 OUTER HARBOR	314-13
HOLIDAY MARINAS INC	2800 MINER ST	318-13
LA FIRE STATION 110	2945 MINER ST	327-13
BOUCHARD PETRO-CHEMICAL	1420 COIL AVE	331-12,13
LAUSD POINT FERMIN ELEM SCHOOL	3333 KERCKHOFF AVE	337-13
SAN PEDRO SKILLS CENTER	920 WEST 36TH ST	339-12
CABRILLO MARINE MUSEUM	3720 STEPHEN WHITE DR	343-13

## EXECUTIVE SUMMARY

RCRA-NonGen: RCRAInfo is EPA's comprehensive information system, providing access to data supporting the Resource Conservation and Recovery Act (RCRA) of 1976 and the Hazardous and Solid Waste Amendments (HSWA) of 1984. The database includes selective information on sites which generate, transport, store, treat and/or dispose of hazardous waste as defined by the Resource Conservation and Recovery Act (RCRA). Non-Generators do not presently generate hazardous waste.

A review of the RCRA-NonGen list, as provided by EDR, and dated 02/17/2010 has revealed that there are 12 RCRA-NonGen sites within the searched area.

<u>Site</u>	<u>Address</u>	<u>Map ID</u>
<b>AMERICAN PRESIDENT LINES LTD</b>	<b>2001 JOHN GIBSON BLVD</b>	<b>12-3</b>
<b>G S CORP</b>	<b>2215 N GAFFEY ST</b>	<b>16-2,5</b>
<b>LAUSD COOPER HS</b>	<b>2210 TAPER AVE</b>	<b>20-5</b>
<b>WESTERN FUEL OIL CO</b>	<b>2100 N GAFFEY</b>	<b>2-5</b>
ARCO CHEM CO GATX TERM CORP	BERTH 70-71 SIGNAL ST	52-6
TOSCO CORP GATX TANK STOR	1900 WILMINGTON SAN PED	52-6
<b>TODD PACIFIC SHIPYARDS CORPORA</b>	<b>710 N FRONT ST</b>	<b>90-6</b>
SANDOVAL TRUCKING	201 N BEACON ST	126-9
<b>BASF CORP AT REFINERS MKTG CO</b>	<b>100 S SEASIDE AVE BASF</b>	<b>164-9</b>
<b>BENJAMIN AVILA DBA AVILAS TRUC</b>	<b>1052 W 7TH ST</b>	<b>186-8</b>
<b>SAN PEDRO MARINE INC</b>	<b>BERTH 74 LOS ANGELES</b>	<b>224-9</b>
SOUTHBAY INDUSTRIAL SERVICES I	2701 SAN RAMON DR	225-7

ERNS: The Emergency Response Notification System records and stores information on reported releases of oil and hazardous substances. The source of this database is the U.S. EPA.

A review of the ERNS list, as provided by EDR, and dated 07/09/2010 has revealed that there are 127 ERNS sites within the searched area.

<u>Site</u>	<u>Address</u>	<u>Map ID</u>
2001 JOHN S GIBSON BLVD	2001 JOHN S GIBSON BLVD	12-3
2001 JOHN GIBSON BLVD BERTH 12	2001 JOHN GIBSON BLVD B	12-3
2001 JOHN GIBSON BLVD BERTH 12	2001 JOHN GIBSON BLVD B	12-3
2001 JOHN GIBSON BLVD	2001 JOHN GIBSON BLVD	12-3
2001 JOHN GIBSON BLVD.	2001 JOHN GIBSON BLVD.	12-3
2001 JOHN GIBSON BLVD	2001 JOHN GIBSON BLVD	12-3
2001 JOHN GIBSON BLVD	2001 JOHN GIBSON BLVD	12-3
2001 JOHN GIBSON BLVD	2001 JOHN GIBSON BLVD	12-3
2001 JOHN GIBSON BLVD	2001 JOHN GIBSON BLVD	12-3
2001 JOHN GIBSON BLVD.	2001 JOHN GIBSON BLVD.	12-3
2001 JOHN GIBSON BLVD	2001 JOHN GIBSON BLVD	12-3
2001 JOHN GIBSON BLVD.	2001 JOHN GIBSON BLVD.	12-3
2001 JOHN GIBSON BLVD.	2001 JOHN GIBSON BLVD.	12-3
2001 JOHN GIBSON BLVD.	2001 JOHN GIBSON BLVD.	12-3
2001 JOHN GIBSON BLVD.	2001 JOHN GIBSON BLVD.	12-3
2001 JOHN GIBSON BLVD	2001 JOHN GIBSON BLVD	12-3
2001 JOHN GIBSON BLVD	2001 JOHN GIBSON BLVD	12-3
2001 JOHN GIBSON BLVD	2001 JOHN GIBSON BLVD	12-3
2001 JOHN GIBSON BLVD.	2001 JOHN GIBSON BLVD.	12-3
2001 JOHN GIBSON BLVD	2001 JOHN GIBSON BLVD	12-3
2001 JOHN GIBSON BLVD.	2001 JOHN GIBSON BLVD.	12-3
2100 N. GAFFY	2100 N. GAFFY	19-6
2110 NORTH GAFFEY STREET	2110 NORTH GAFFEY STREE	22-5
2110 N. GAFFEY	2110 N. GAFFEY	22-5
1830 JOHN GIBSON BLVD	1830 JOHN GIBSON BLVD	24-6
1830 JOHN S GIBSON BLVD	1830 JOHN S GIBSON BLVD	24-6
2000 N GAFFEY	2000 N GAFFEY	29-5

## EXECUTIVE SUMMARY

<u>Site</u>	<u>Address</u>	<u>Map ID</u>
2100 NORTH GAFFEY WEST BASIN O	2100 NORTH GAFFEY WEST	30-5
2001 JOHN GIBSON BLVD BERTH 12	2001 JOHN GIBSON BLVD B	37-6
2001 JOHN GIBSON BLVD PIER 126	2001 JOHN GIBSON BLVD P	37-6
2001 JOHN GIBSON BLVD BERTH 12	2001 JOHN GIBSON BLVD B	37-6
1701 N GAFFEY ST	1701 N GAFFEY ST	43-5,6
1102 BLOOMWOOD RD	1102 BLOOMWOOD RD	49-5
1900 WILMINGTON SAN PEDRO RD /	1900 WILMINGTON SAN PED	52-6
1900 WILMINGTON SAN PEDRO RD	1900 WILMINGTON SAN PED	52-6
GATX BERTH 118	GATX BERTH 118	52-6
1900 WILMINGTON SAN PEDRO	1900 WILMINGTON SAN PED	54-6
1363 N GAFFEY STREET	1363 N GAFFEY STREET	55-5,6
1313 NORTH GAFFEY	1313 NORTH GAFFEY	59-5,6
1414 BRETT PLACE	1414 BRETT PLACE	63-5
CAPITOL METALS AT 2000 S. WEST	CAPITOL METALS AT 2000	75-5
I-110 ACROSS FROM 2100 N. GAFF	I-110 ACROSS FROM 2100	77-5
KEEL AND REGAN STS	KEEL AND REGAN STS	87-6
100 SWINFORD	100 SWINFORD	89-6
1510 SWINFORD	1510 SWINFORD	89-6
1510 SWINFORD DOCK 2, BERTH 98	1510 SWINFORD DOCK 2, B	89-6
1510 SWINFORD ST, SAN PEDRO, C	1510 SWINFORD ST, SAN P	89-6
1510 SWINFORD	1510 SWINFORD	89-6
1510 SWINFORD ST	1510 SWINFORD ST	89-6
1510 SWINEFORD	1510 SWINEFORD	89-6
4237 MIRALESTE	4237 MIRALESTE	101-4
311 N GAFFEY	311 N GAFFEY	117-5,6,8,9
311 N GAFFEY	311 N GAFFEY	117-5,6,8,9
319 ENROSE	319 ENROSE	118-4,7
4400 MIRALESTE DR	4400 MIRALESTE DR	122-4,7
29844 KNOLLVIEW	29844 KNOLLVIEW	124-7
131 NORTH BANDINI	131 NORTH BANDINI	129-8
300 SOUTH HARBOR BLVD.	300 SOUTH HARBOR BLVD.	147-9
300 SOUTH HARBOR BLVD.	300 SOUTH HARBOR BLVD.	147-9
444 S. HARBOR BLVD	444 S. HARBOR BLVD	147-9
318 GAFFY STREET	318 GAFFY STREET	149-8,9
100 TERMINAL WAY	100 TERMINAL WAY	164-9
1028 SOUTH SEASIDE AVE BERTH 2	1028 SOUTH SEASIDE AVE	176-9
445 W. 7TH	445 W. 7TH	193-9
SOUTHWESTERN TERMINAL 799 SO S	SOUTHWESTERN TERMINAL 7	199-9
2215 RUE LE CHARLENE	2215 RUE LE CHARLENE	218-7
614 TERMINAL WAY ROW L4 IMMEDI	614 TERMINAL WAY ROW L4	221-9
750 SAMPSON WAY	750 SAMPSON WAY	232-9
326 W. 13TH ST	326 W. 13TH ST	237-9
#76 BERTH	#76 BERTH	240-9
950 SAMPSON WAY	950 SAMPSON WAY	254-9
950 SAMPSON WAY SAN PEDRO MARI	950 SAMPSON WAY SAN PED	254-9
950 SAMPSON WAY	950 SAMPSON WAY	254-9
950 SAMPSON WAY	950 SAMPSON WAY	254-9
950 SAMPSON WAY	950 SAMPSON WAY	254-9
950 SAMPSON WAY	950 SAMPSON WAY	254-9
2220 SIGNAL ST	2220 SIGNAL ST	260-9
668 W 18TH ST	668 W 18TH ST	265-8,9
2186 SIGNAL PLACE	2186 SIGNAL PLACE	267-9
2186 SIGNAL PLACE	2186 SIGNAL PLACE	267-9
2186 SIGNAL PLACE	2186 SIGNAL PLACE	267-9
2186 SIGNAL PLACE	2186 SIGNAL PLACE	267-9
2186 SIGNAL PLACE	2186 SIGNAL PLACE	267-9

## EXECUTIVE SUMMARY

<u>Site</u>	<u>Address</u>	<u>Map ID</u>
2186 SIGNAL PLACE	2186 SIGNAL PLACE	267-9
2186 SIGNAL PLACE	2186 SIGNAL PLACE	267-9
2186 SIGNAL PLACE	2186 SIGNAL PLACE	267-9
229 E 22ND ST	229 E 22ND ST	276-9
208 EAST 22ND ST	208 EAST 22ND ST	276-9
449 WEST 21ST ST	449 WEST 21ST ST	285-9,13
2500 MINER STREET	2500 MINER STREET	287-9,13
FREITZ MARINA, 2500 MINER STRE	FREITZ MARINA, 2500 MIN	287-9,13
2500 MINER ST	2500 MINER ST	287-9,13
2500 MINOR STREET	2500 MINOR STREET	287-9,13
2420 SOUTH WESTERN AVE.	2420 SOUTH WESTERN AVE.	298-12
1603 WEST 25TH ST	1603 WEST 25TH ST	298-12
BERTH 93-A LA HARBOR	BERTH 93-A LA HARBOR	299-13
MARINA 2500 VIA CABRILLO	MARINA 2500 VIA CABRILL	300-13
241 WATCHHORN WALK	241 WATCHHORN WALK	312-13
241 WATCHHORN WALK	241 WATCHHORN WALK	312-13
241 WATCHHORN WALK	241 WATCHHORN WALK	312-13
241 WATCHHORN WALK	241 WATCHHORN WALK	312-13
241 WATCHHORN WALK	241 WATCHHORN WALK	312-13
514 WEST 26TH ST.	514 WEST 26TH ST.	316-13
2800 MINER ST.	2800 MINER ST.	318-13
2800 MINOR STREET	2800 MINOR STREET	318-13
2800 MINOR STREET	2800 MINOR STREET	318-13
2800 MINOR STREET	2800 MINOR STREET	318-13
BOAT WORKS	BOAT WORKS	318-13
210 WHALERS WALK	210 WHALERS WALK	323-13
224 WHALERS WALK	224 WHALERS WALK	323-13
224 WHALERS WALK	224 WHALERS WALK	323-13
224 WHALERS WALK	224 WHALERS WALK	323-13
224 WHALERS WALK	224 WHALERS WALK	323-13
224 WHALERS WALK	224 WHALERS WALK	323-13
224 WHALERS WALK	224 WHALERS WALK	323-13
224 WHALERS WALK	224 WHALERS WALK	323-13
224 WHALERS WALK	224 WHALERS WALK	323-13
224 WHALERS WALK	224 WHALERS WALK	323-13
224 WHALERS WALK	224 WHALERS WALK	323-13
224 WHALERS WALK	224 WHALERS WALK	323-13
224 WHALERS WALK	224 WHALERS WALK	323-13
2800 VIA CABRILLO MARINA	2800 VIA CABRILLO MARIN	326-13
2800 VIA CABRILLO MARINA	2800 VIA CABRILLO MARIN	326-13
2800 VIA CABRILLO MARINA	2800 VIA CABRILLO MARIN	326-13
2800 VIA CABRILLO MARINA	2800 VIA CABRILLO MARIN	326-13
2800 VIA CABRILLO MARINA	2800 VIA CABRILLO MARIN	326-13
2800 VIA CABRILLO MARINA	2800 VIA CABRILLO MARIN	326-13
2800 VIA CABRILLO MARINA	2800 VIA CABRILLO MARIN	326-13
2800 VIA CABRILLO MARINA	2800 VIA CABRILLO MARIN	326-13
BERTH 46	BERTH 46	335-13
OIL TERMINAL BERTH NO. 46	OIL TERMINAL BERTH NO.	335-13

## EXECUTIVE SUMMARY

HMIRS: The Hazardous Materials Incident Report System contains hazardous material spill incidents reported to the Department of Transportation. The source of this database is the U.S. EPA.

A review of the HMIRS list, as provided by EDR, and dated 04/06/2010 has revealed that there are 6 HMIRS sites within the searched area.

<u>Site</u>	<u>Address</u>	<u>Map ID</u>
Not reported	2110 N GAFFEY	21-5,6
Not reported	2110 N GAFFEY ST	22-5
Not reported	1701 N GAFFEY ST	43-5,6
Not reported	1701 N GAFFEY ST	43-5,6
Not reported	100 REAGAN ST	85-6
Not reported	100 REAGAN ST	85-6

Department of Transportation, Office of Pipeline Safety Incident and Accident data.

A review of the DOT OPS list, as provided by EDR, and dated 01/12/2010 has revealed that there are 7 DOT OPS sites within the searched area.

<u>Site</u>	<u>Address</u>	<u>Map ID</u>
Not reported	1238 STONEWOOD COURT	38-5
Not reported	1238 STONEWOOD COURT	38-5
Not reported	1017 MEYLER STREET	223-8
Not reported	INTERSECTION PACIFIC &	241-9
Not reported	17TH ST & PACIFIC AVE	244-9
Not reported	779 WEST 23RD ST	301-12
Not reported	759 W. 23RD STREET	301-12

US BROWNFIELDS: The EPA's listing of Brownfields properties addressed by Cooperative Agreement Recipients and Brownfields properties addressed by Targeted Brownfields Assessments

A review of the US BROWNFIELDS list, as provided by EDR, and dated 06/24/2010 has revealed that there is 1 US BROWNFIELDS site within the searched area.

<u>Site</u>	<u>Address</u>	<u>Map ID</u>
335 NORTH GAFFEY STREET	335 NORTH GAFFEY STREET	117-5,6,8,9

DOD: Consists of federally owned or administered lands, administered by the Department of Defense, that have any area equal to or greater than 640 acres of the United States, Puerto Rico, and the U.S. Virgin Islands.

A review of the DOD list, as provided by EDR, and dated 12/31/2005 has revealed that there is 1 DOD site within the searched area.

<u>Site</u>	<u>Address</u>	<u>Map ID</u>
FORT MACARTHUR		0-12,13,15,16

## EXECUTIVE SUMMARY

FUDS: The Listing includes locations of Formerly Used Defense Sites Properties where the US Army Corps Of Engineers is actively working or will take necessary cleanup actions.

A review of the FUDS list, as provided by EDR, and dated 12/31/2009 has revealed that there is 1 FUDS site within the searched area.

<u>Site</u>	<u>Address</u>	<u>Map ID</u>
FT. MACARTHUR LOWER&MIDDLE RES		345-12,13

TSCA: The Toxic Substances Control Act identifies manufacturers and importers of chemical substances included on the TSCA Chemical Substance Inventory list. It includes data on the production volume of these substances by plant site. The United States Environmental Protection Agency has no current plan to update and/or re-issue this database.

A review of the TSCA list, as provided by EDR, and dated 12/31/2006 has revealed that there are 2 TSCA sites within the searched area.

<u>Site</u>	<u>Address</u>	<u>Map ID</u>
WESTERN FUEL OIL CO	2100 NORTH GAFFEY ST	22-5
BP MARINE AMERICAS	1363 NORTH GAFFEY ST	55-5,6

FTTS: FTTS tracks administrative cases and pesticide enforcement actions and compliance activities related to FIFRA, TSCA and EPCRA (Emergency Planning and Community Right-to-Know Act) over the previous five years. To maintain currency, EDR contacts the Agency on a quarterly basis.

A review of the FTTS list, as provided by EDR, and dated 04/09/2009 has revealed that there are 5 FTTS sites within the searched area.

<u>Site</u>	<u>Address</u>	<u>Map ID</u>
<b>CHRIST LUTHERAN SCHOOL</b>	<b>28850 WESTERN AVE</b>	<b>53-5</b>
ICON INTERNATIONAL (MARINE HAR	345 N. BEACON ST.	121-6,9
<b>PROPERTIES WEST</b>	<b>1432 W.8TH ST.</b>	<b>197-8</b>
<b>PROP MAX</b>	<b>1536 W. 25TH ST.,#J</b>	<b>298-12</b>
FORT MACARTHUR (U S AIR FORCE)	2400 S PACIFIC AVE	303-13

HIST FTTS: A complete administrative case listing from the FIFRA/TSCA Tracking System (FTTS) for all ten EPA regions. The information was obtained from the National Compliance Database (NCDB). NCDB supports the implementation of FIFRA (Federal Insecticide, Fungicide, and Rodenticide Act) and TSCA (Toxic Substances Control Act). Some EPA regions are now closing out records. Because of that, and the fact that some EPA regions are not providing EPA Headquarters with updated records, it was decided to create a HIST FTTS database. It included records that may not be included in the newer FTTS database updates. This database is no longer updated.

A review of the HIST FTTS list, as provided by EDR, and dated 10/19/2006 has revealed that there are 4 HIST FTTS sites within the searched area.

<u>Site</u>	<u>Address</u>	<u>Map ID</u>
<b>CHRIST LUTHERAN SCHOOL</b>	<b>28850 WESTERN AVE</b>	<b>53-5</b>
<b>PROPERTIES WEST</b>	<b>1432 W.8TH ST.</b>	<b>197-8</b>



## EXECUTIVE SUMMARY

<u>Site</u>	<u>Address</u>	<u>Map ID</u>
<b>PROP MAX</b> FORT MACARTHUR (U S AIR FORCE)	<b>1536 W. 25TH ST.,#J</b> 2400 S PACIFIC AVE	<b>298-12</b> 303-13

FINDS: The Facility Index System contains both facility information and "pointers" to other sources of information that contain more detail. These include: RCRIS; Permit Compliance System (PCS); Aerometric Information Retrieval System (AIRS); FATES (FIFRA [Federal Insecticide Fungicide Rodenticide Act] and TSCA Enforcement System, FTTS [FIFRA/TSCA Tracking System]; CERCLIS; DOCKET (Enforcement Docket used to manage and track information on civil judicial enforcement cases for all environmental statutes); Federal Underground Injection Control (FURS); Federal Reporting Data System (FRDS); Surface Impoundments (SIA); TSCA Chemicals in Commerce Information System (CICS); PADS; RCRA-J (medical waste transporters/disposers); TRIS; and TSCA. The source of this database is the U.S. EPA/NTIS.

A review of the FINDS list, as provided by EDR, and dated 04/14/2010 has revealed that there are 171 FINDS sites within the searched area.

<u>Site</u>	<u>Address</u>	<u>Map ID</u>
<b>TRANSIT CONTRACTS</b>	<b>221 MAR VISTA</b>	<b>2-3</b>
<b>SGS CONTROL SVCS</b>	<b>225 MARVISTA</b>	<b>2-3</b>
<b>LA BUNKER SURVEYORS</b>	<b>239 MAR CISTA AVE</b>	<b>4-3</b>
<b>LA PUMPIMG PLANT #77</b>	<b>1220 W B ST</b>	<b>6-3</b>
<b>AMERICAN PRESIDENT LINES LTD</b>	<b>2001 JOHN GIBSON BLVD</b>	<b>12-3</b>
<b>LA CO. SANITATION DISTRICT</b>	<b>AVENIDA APRENDA/WESTERN</b>	<b>14-2,5</b>
<b>G S CORP</b>	<b>2215 N GAFFEY ST</b>	<b>16-2,5</b>
<b>LAUSD COOPER HS</b>	<b>2210 TAPER AVE</b>	<b>20-5</b>
COOPER (JAMES FENIMORE) COMMUN	2210 TAPER AVENUE	20-5
<b>THE HOME DEPOT NO 1005</b>	<b>2115 N GAFFEY ST</b>	<b>22-5</b>
SAN PEDRO TERMINAL	2110 NORTH GAFFEY STREE	22-5
<b>WESTERN FUEL OIL CO</b>	<b>2100 N GAFFEY</b>	<b>22-5</b>
<b>WASTE DISPOSAL SYSTEMS</b>	<b>2100 N GAFFEY ST</b>	<b>22-5</b>
SAN PEDRO SCIENCE CENTER	2201 BARRYWOOD AVE	23-5
DODSON (RUDECINDA SEPULVEDA) M	28014 MONTEREINA DR.	26-4,5
<b>GARDEN VILLAGE CLEANERS</b>	<b>28144 S WESTERN AVE</b>	<b>28-5</b>
<b>BAY SHORES MEDICAL GRP</b>	<b>28633 S WESTERN AVE STE</b>	<b>31-5</b>
<b>ROCHE THOMAS CORPORATION</b>	<b>1921 N GAFFEY ST C</b>	<b>32-5</b>
TAPER AVE ELEMENTARY SCHOOL	1824 TAPER AVE.	36-5
<b>INTERSTATE BAKERIES CORP</b>	<b>1701 N GAFFEY</b>	<b>43-5,6</b>
<b>SO CAL GAS SAN PEDRO BASE</b>	<b>755 W CAPITAL DR</b>	<b>45-5</b>
<b>GOYA CLEANERS</b>	<b>28625 S WESTERN AVE</b>	<b>46-5</b>
CHRIST LUTHERAN	28850 WESTERN AVE	53-5
<b>KMLT, LLC LOS ANGELES HARBOR T</b>	<b>2200 JOHN S GIBSON BLVD</b>	<b>54-6</b>
<b>SAN PEDRO TERMINAL</b>	<b>1363 N GAFFEY ST</b>	<b>55-5,6</b>
BP EXP & OIL INC, BP MARINE AM	1363 N GAFFEY ST	55-5,6
<b>ADVANCE GERMAN CAR</b>	<b>1303 N GAFFEY ST</b>	<b>59-5,6</b>
<b>ADVANCE AUTO</b>	<b>637 BATTERY ST</b>	<b>59-5,6</b>
<b>BAY AREA AUTO</b>	<b>751 BATTERY ST</b>	<b>59-5</b>
<b>LA HARBOR ANIMAL SHELTER</b>	<b>735 BATTERY ST</b>	<b>59-5</b>
<b>KRUPP MAK</b>	<b>729 BASIN ST</b>	<b>60-5</b>
<b>HILL SIDE CLEANERS</b>	<b>29117 S WESTERN AVE</b>	<b>64-5</b>
<b>AMERICAN PRESIDENT LINES LTD</b>	<b>BERTH 93A LOS ANGELES H</b>	<b>68-6</b>
<b>CHEVRON STATION NO 99747</b>	<b>1105 N GAFFEY ST</b>	<b>70-5,6</b>
<b>COLGRO PLATING</b>	<b>1006 N GAFFEY ST</b>	<b>77-5</b>
<b>WEST COAST AEROSPACE, INC</b>	<b>812 MIRAFLORES ST</b>	<b>77-5</b>
<b>ART YUNG DESIGNS INC</b>	<b>811 MIRAFLORES ST</b>	<b>77-5</b>

## EXECUTIVE SUMMARY

Site	Address	Map ID
<b>MARTIN CHAS INSPECTOR &amp; CONTRO</b>	<b>825 MIRA FLORES ST</b>	<b>77-5</b>
PARK WESTERN PLACE ELEMENTARY	1214 PARK WESTERN PL.	78-5
PARK WESTERN ELEMENTARY SCHOOL	1214 PARK WESTERN PL	78-5
<b>MASTER CLEANERS</b>	<b>1018 N WESTERN AVE</b>	<b>79-5</b>
KRAGEN AUTO PARTS #1649	29227 S WESTERN AVE	79-5
MIRALESTE KINDERGARTEN	6245 VIA CANADA	83-4
<b>EQUILON ENTERPRISES</b>	<b>900 N WESTERN</b>	<b>84-5</b>
<b>CHEVRON STATION 9 8987</b>	<b>29421 S WESTERN AVE</b>	<b>84-5</b>
<b>LA UNIFIED SCHOOL DISTRICT HAR</b>	<b>740 NORTH PACIFIC AVENU</b>	<b>86-6</b>
<b>TODD PACIFIC SHIPYARDS CORPORA</b>	<b>710 N FRONT ST</b>	<b>90-6</b>
<b>WESTERN CLEANERS</b>	<b>29505 WESTERN AVE UNIT</b>	<b>92-5</b>
VALVOLINE INSTANT OIL CHANGE	29519 WESTERN AVE	92-5
CRESTWOOD STREET ELEMENTARY	1946 W. CRESTWOOD ST.	94-5
<b>CATALINA ISLAND CRUISES</b>	<b>BERTH 95</b>	<b>97-6</b>
<b>CHEVRON STATION NO 98649</b>	<b>40 MIRALESTE PLAZA</b>	<b>98-4</b>
<b>LOS ANGELES CRUISE SHIP TERMIN</b>	<b>BERTH 93C</b>	<b>99-6</b>
<b>PECK PARK REC CENTER</b>	<b>560 N WESTERN AVE</b>	<b>100-5</b>
<b>LA PUMPING PLANT #67</b>	<b>530 N HARBOR BLVD</b>	<b>102-6</b>
<b>PLAZA AUTOMOTIVE CENTER</b>	<b>505 N PACIFIC AVE</b>	<b>107-6</b>
<b>LA HARBOR FIRE ALARM HEADQUART</b>	<b>501 N MESA ST</b>	<b>111-6</b>
<b>LOS ANGELES USD BANDINI ELEM S</b>	<b>425 N BANDINI ST</b>	<b>112-5</b>
<b>LOS ANGELES USD BARTON HILL EL</b>	<b>423 N PACIFIC AVE</b>	<b>114-6,9</b>
<b>LA FIRE STATION 53</b>	<b>438 N MESA ST</b>	<b>115-6,9</b>
<b>SHELL SERVICE STATION</b>	<b>406 N GAFFEY</b>	<b>117-5,6,8,9</b>
335 NORTH GAFFEY STREET	335 NORTH GAFFEY STREET	117-5,6,8,9
<b>OVERSEAS SHIPPING CO</b>	<b>BERTH 228 D+E</b>	<b>119-6,9</b>
<b>ARCO BATTERY MFG CO</b>	<b>327 N HARBOR BLVD</b>	<b>123-6,9</b>
SANDOVAL TRUCKING	201 N BEACON ST	126-9
<b>OCEAN PARK CLEANERS</b>	<b>114 N GAFFEY ST UNIT C</b>	<b>132-8,9</b>
<b>CHEVRON STATION NO 98701</b>	<b>106 S GAFFEY ST</b>	<b>132-8,9</b>
MERRITT WESTERN APARTMENTS	1516 W. 1ST STREET	133-8
<b>BILL SOUTH SERVICE</b>	<b>986 W FIRST ST</b>	<b>136-8</b>
<b>SHELL SERVICE STATION</b>	<b>987 W 1ST</b>	<b>136-8</b>
<b>LA DEPARTMENT WATER &amp; POWER</b>	<b>950 W 1ST ST</b>	<b>137-8</b>
<b>HARBOR DISTRICT YARD</b>	<b>950 W 1ST ST</b>	<b>137-8</b>
<b>WORLD OIL CO</b>	<b>210 S GAFFEY</b>	<b>144-8,9</b>
<b>J&amp;A CUSTOM COACH WORKS</b>	<b>239 SOUTH PACIFIC AVE</b>	<b>145-9</b>
<b>BP WEST COAST PRODUCTS LLC NO</b>	<b>302 S PACIFIC AVE</b>	<b>145-9</b>
<b>MIKES SERVICE</b>	<b>302 S PACIFIC</b>	<b>145-9</b>
CROWLEY MARINE SERVICES INC	300 S HARBOR BLVD	147-9
<b>CROWLEY MARINE SERVICES INC</b>	<b>BERTH 86</b>	<b>147-9</b>
WILLENBERG (ERNEST P.) SPECIAL	424 WEYMOUTH AVE.	154-8
EVERGREEN	260 WEST 5TH STREET, SU	155-9
RICHARDS CLEANERS	538 WEST 5TH STREET	158-9
<b>E &amp; R AUTO RPR</b>	<b>526 W 5TH ST</b>	<b>158-9</b>
AUTOZONE #5480	535 S PACIFIC AVE	158-9
<b>J &amp; N DISCOUNT RADIATOR</b>	<b>500 S GAFFEY</b>	<b>159-8,9</b>
<b>REGAL CLEANERS</b>	<b>519 S GAFFEY ST</b>	<b>159-8,9</b>
<b>KWIK KOPY PRINTING 344</b>	<b>350 W 5TH ST SUITE 103</b>	<b>163-9</b>
<b>PACIFIC BELL</b>	<b>425 W 5TH ST</b>	<b>163-9</b>
<b>BASF CORP AT REFINERS MKTG CO</b>	<b>100 S SEASIDE AVE BASF</b>	<b>164-9</b>
<b>BIODIAGNOSTICS LABORATORY</b>	<b>1360 W 6TH ST</b>	<b>167-8</b>
<b>SMITH BROTHERS ENTERPRISE</b>	<b>1350 W 6TH ST STE 5</b>	<b>167-8</b>
<b>F WORKMON &amp; A DELMON MD</b>	<b>1294 W 6TH ST 210</b>	<b>168-8</b>
<b>LESLIE J HARRIS MD</b>	<b>1294 W 6TH ST 205</b>	<b>168-8</b>
<b>WALTERS VW REPAIR</b>	<b>678 W 6TH ST</b>	<b>169-8,9</b>

## EXECUTIVE SUMMARY

Site	Address	Map ID
<b>M &amp; M BODY WORKS INC</b>	<b>546 W 6TH STREET</b>	<b>171-9</b>
<b>LA MARITIME HISTORY MUSEUM</b>	<b>100 E 6TH ST</b>	<b>174-9</b>
<b>ADVERTISING INK</b>	<b>425 W 6TH ST</b>	<b>175-9</b>
<b>LA FIRE STATION 112</b>	<b>350 S SEASIDE AVE</b>	<b>176-9</b>
<b>LA SAN PEDRO MUNICIPAL BLDG</b>	<b>638 S BEACON ST</b>	<b>177-9</b>
TRINITY LUTHERAN SCHOOL	1450 W SEVENTH ST	179-8
<b>SAN PEDRO PENINSULA HOSPITAL</b>	<b>1300 W 7TH ST</b>	<b>185-8</b>
<b>BENJAMIN AVILA DBA AVILAS TRUC</b>	<b>1052 W 7TH ST</b>	<b>186-8</b>
<b>GAFFEY CLEANERS</b>	<b>801 S GAFFEY ST</b>	<b>187-8,9</b>
SAN PEDRO QUICK LUBE	670 WEST 7TH STREET	188-8,9
WESTERN FISH COMPANY, INC.	740 SOUTH SEASIDE AVENU	194-9
CABRILLO AVENUE ELEMENTARY	732 S. CABRILLO AVE.	195-8
<b>PROPERTIES WEST</b>	<b>1432 W.8TH ST.</b>	<b>197-8</b>
KRAGEN AUTO PARTS #1514	842 S. PACIFIC AVE	200-9
<b>LA SAN PEDRO REGIONAL LIBRARY</b>	<b>931 S GAFFEY ST</b>	<b>216-8,9</b>
<b>PIERCE BROS GARAGE</b>	<b>481 10TH ST</b>	<b>217-9</b>
<b>ANCON MARINE INC</b>	<b>1010 SOUTH CABRILLO AVE</b>	<b>222-8</b>
<b>SAN PEDRO MARINE INC</b>	<b>BERTH 74 LOS ANGELES</b>	<b>224-9</b>
SOUTHBAY INDUSTRIAL SERVICES I	2701 SAN RAMON DR	225-7
<b>JOE FURGEL AUTO PART &amp; SERV IN</b>	<b>1106 SO GAFFEY ST</b>	<b>229-8,9</b>
<b>JOHNNYS CHEVRON</b>	<b>1306 S GAFFEY ST</b>	<b>238-8,9</b>
<b>LA PUMPING PLANT #81</b>	<b>0 BERTH 77</b>	<b>239-9</b>
<b>LA SEWER OFFICE BUILDING</b>	<b>1406 GAFFEY ST</b>	<b>243-8,9</b>
<b>PACIFIC BODY SHOP</b>	<b>1437 S PACIFIC AVE</b>	<b>244-9</b>
<b>CYCLE SERVICE</b>	<b>1503 S PACIFIC AVE</b>	<b>244-9</b>
<b>Y &amp; S AUTO BODY SHOP</b>	<b>1553 S PACIFIC AVE</b>	<b>244-9</b>
15TH STREET ELEMENTARY SCHOOL	PACIFIC AVENUE/WEST 16T	244-9
<b>K &amp; B MARINE SYSTEMS SVC</b>	<b>1600 S PACIFIC AVE</b>	<b>244-9</b>
<b>BIKE PALACE</b>	<b>1600 S PACIFIC AVE</b>	<b>244-9</b>
<b>PLAZA AUTO REPAIR</b>	<b>1610 S PACIFIC</b>	<b>244-9</b>
<b>SHELL SERVICE STATION 136043</b>	<b>1631 W PACIFIC</b>	<b>244-9</b>
<b>CENTURY MOTORCYCLES</b>	<b>1640 S PACIFIC</b>	<b>244-9</b>
<b>LAUSD-SAN PEDRO HIGH SCHOOL</b>	<b>1001 W 15TH ST</b>	<b>245-8</b>
DANA (RICHARD HENRY) MIDDLE	1501 S. CABRILLO AVE.	247-8
FIFTEENTH STREET ELEMENTARY	1527 S. MESA ST.	249-9
<b>CHARLIES AUTO CTR</b>	<b>1637 S GAFFEY</b>	<b>253-8,9</b>
L.A. CITY FIRE DEPT	1601 S. GRAND AVE	255-9
<b>ARCO FACILITY NO 09606</b>	<b>1706 S GAFFEY ST</b>	<b>258-8,9</b>
<b>HARBOR FUMIGATION INC</b>	<b>2200 MINER ST</b>	<b>259-9</b>
<b>AG-FUME SERVICE INC</b>	<b>2200 MINER ST</b>	<b>259-9</b>
WESTWAY TERMINAL COMPANY	2220 SIGNAL ST	260-9
<b>BRITISH EUROPEAN AUTO REPAIR</b>	<b>1739 S GAFFEY</b>	<b>261-8,9</b>
<b>SOUTH BAY AURO BODY</b>	<b>1831 S PACIFIC</b>	<b>270-9</b>
<b>LA PUMPING PLANT #80</b>	<b>2185 SIGNAL</b>	<b>272-9</b>
ARTHUR D SCHMIDT	2161 W 25TH ST #26	273-7
<b>KINDER MORGAN LIQUIDS TERMINAL</b>	<b>220 EAST 22ND STREET</b>	<b>276-9</b>
GATX ANNEX TERMINAL-SAN PEDRO	208 EAST 22ND STREET	276-9
<b>JOE &amp; MIKE GOOD AUTO</b>	<b>2010 S PACIFIC AVE</b>	<b>279-9,13</b>
LELAND STREET ELEMENTARY	2120 S. LELAND ST.	286-8,12
<b>LAUSD LELAND ELEM SCHOOL</b>	<b>2120 LELAND ST</b>	<b>286-8,12</b>
<b>ROBERT BORDEN DMD</b>	<b>2403 MORAY AVE</b>	<b>290-12</b>
<b>UNION OIL PIPELINE,HARBOR STAT</b>	<b>200 WEST 22ND ST</b>	<b>291-13</b>
<b>TURNVEYOR SVC CO</b>	<b>2309 W ADAMS</b>	<b>293-13</b>
<b>MARTY'S VILLAGE CLEANERS</b>	<b>2302 S WESTERN AVE</b>	<b>295-12</b>
<b>SOUTH BAY GLASSING</b>	<b>2234 S PACIFIC AVE</b>	<b>296-13</b>
<b>CHEVRON STATION NO 97864</b>	<b>1660 W 25TH ST</b>	<b>298-12</b>

## EXECUTIVE SUMMARY

<u>Site</u>	<u>Address</u>	<u>Map ID</u>
<b>LUCKY CLEANERS</b>	<b>1609 W 25TH STREET</b>	<b>298-12</b>
LUCKY DRY CLEANERS	1609 W 25TH ST	298-12
<b>PROP MAX</b>	<b>1536 W. 25TH ST.,#J</b>	<b>298-12</b>
SOUTH BAY PROPERTY MANAGEMENT	1536 W. 25TH STREET #A	298-12
<b>EXXONMOBIL OIL CORPORATION 131</b>	<b>2490 S WESTERN AVE</b>	<b>298-12</b>
<b>FORT MACARTHUR</b>	<b>2400 PACIFIC AVENUE</b>	<b>303-13</b>
<b>PACIFIC VIEW DRY CLEANERS</b>	<b>1438 W 25TH ST</b>	<b>307-12</b>
SOUTH SHORES/CSUDH VISUAL & PE	2060 W. 35TH ST.	308-11
<b>LA FIRE STATION 101</b>	<b>1414 W 25TH ST</b>	<b>309-12</b>
<b>ANDYS PAINTING CO</b>	<b>1037 W 25TH ST NO 4</b>	<b>311-12</b>
<b>SAN PEDRO BOAT WORKS</b>	<b>BERTH 44 OUTER HARBOR</b>	<b>314-13</b>
<b>HOLIDAY MARINAS INC</b>	<b>2800 MINER ST</b>	<b>318-13</b>
FORT MACARTHUR LOWER & MIDDLE	2901 ARTHUR MACARTHUR R	322-13
<b>LA FIRE STATION 110</b>	<b>2945 MINER ST</b>	<b>327-13</b>
<b>SOUTH REGION HIGH SCHOOL NO 15</b>	<b>3200 ALMA ST</b>	<b>328-12</b>
ANGEL'S GATE (CONT.)	3200 ALMA ST.	328-12
WHITE POINT ELEMENTARY SCHOOL	1410 SILVIUS ST.	329-12
<b>BOUCHARD PETRO-CHEMICAL</b>	<b>1420 COIL AVE</b>	<b>331-12,13</b>
<b>LAUSD POINT FERMIN ELEM SCHOOL</b>	<b>3333 KERCKHOFF AVE</b>	<b>337-13</b>
<b>SAN PEDRO SKILLS CENTER</b>	<b>920 WEST 36TH ST</b>	<b>339-12</b>
<b>CABRILLO MARINE MUSEUM</b>	<b>3720 STEPHEN WHITE DR</b>	<b>343-13</b>
FEDALIZO COMPANY GROUP	535 W 37TH ST	344-13

RAATS: The RCRA Administration Action Tracking System contains records based on enforcement actions issued under RCRA and pertaining to major violators. It includes administrative and civil actions brought by the United States Environmental Protection Agency. The source of this database is the U.S. EPA.

A review of the RAATS list, as provided by EDR, and dated 04/17/1995 has revealed that there is 1 RAATS site within the searched area.

<u>Site</u>	<u>Address</u>	<u>Map ID</u>
<b>WESTERN FUEL OIL CO</b>	<b>2100 N GAFFEY</b>	<b>22-5</b>

### **STATE AND LOCAL RECORDS**

HIST Cal-Sites: Formerly known as ASPIS, this database contains both known and potential hazardous substance sites. The source is the California Department of Toxic Substance Control. No longer updated by the state agency. It has been replaced by ENVIROSTOR.

A review of the HIST Cal-Sites list, as provided by EDR, and dated 08/08/2005 has revealed that there is 1 HIST Cal-Sites site within the searched area.

<u>Site</u>	<u>Address</u>	<u>Map ID</u>
<b>GATX ANNEX TERMINAL-SAN PEDRO</b>	<b>208 EAST 22ND STREET</b>	<b>276-9</b>

## EXECUTIVE SUMMARY

CA BOND EXP. PLAN: Department of Health Services developed a site-specific expenditure plan as the basis for an appropriation of Hazardous Substance Cleanup Bond Act funds. It is not updated.

A review of the CA BOND EXP. PLAN list, as provided by EDR, and dated 01/01/1989 has revealed that there is 1 CA BOND EXP. PLAN site within the searched area.

<u>Site</u>	<u>Address</u>	<u>Map ID</u>
GATX ANNEX TERMINAL - SAN PEDR	220 E. 22ND STREET	276-9

SCH: This category contains proposed and existing school sites that are being evaluated by DTSC for possible hazardous materials contamination. In some cases, these properties may be listed in the CalSites category. depending on the level of threat to public health and safety or the environment they pose.

A review of the SCH list, as provided by EDR, and dated 11/08/2010 has revealed that there are 3 SCH sites within the searched area.

<u>Site</u>	<u>Address</u>	<u>Map ID</u>
<i>CABRILLO ELEMENTARY SCHOOL-PLY</i>	<i>732 SOUTH CABRILLO</i>	<i>195-8</i>
<i>15TH STREET ELEMENTARY SCHOOL</i>	<i>PACIFIC AVENUE/WEST 16T</i>	<i>244-9</i>
<i>SOUTH REGION HIGH SCHOOL NO. 1</i>	<i>3200 SOUTH ALMA STREET</i>	<i>328-12</i>

SWF/LF: The Solid Waste Facilities/Landfill Sites records typically contain an inventory of solid waste disposal facilities or landfills in a particular state. The data come from the Integrated Waste Management Board's Solid Waste Information System (SWIS) database.

A review of the SWF/LF list, as provided by EDR, and dated 11/22/2010 has revealed that there are 2 SWF/LF sites within the searched area.

<u>Site</u>	<u>Address</u>	<u>Map ID</u>
GAFFEY ST. LANDFILL	1400 N. GAFFEY ST.	55-5,6
HARBOR COMPOSTING OPERATION	425 S. PALOS VERDES ST.	155-9

WDS: California Water Resources Control Board - Waste Discharge System.

A review of the WDS list, as provided by EDR, and dated 06/19/2007 has revealed that there are 11 WDS sites within the searched area.

<u>Site</u>	<u>Address</u>	<u>Map ID</u>
<i>YANG MING CONTAINER TERMINAL</i>	<i>2050 JOHN S. GIBSON BLV</i>	<i>11-3</i>
GAFFEY STREET LANDFILL	501 WESTMONT DR	29-5
<i>TARGET CORP</i>	<i>1701 N GAFFEY ST</i>	<i>43-5,6</i>
<i>LOS ANGELES HARBOR TERMINAL TA</i>	<i>1900 WILMINGTON-SAN PED</i>	<i>52-6</i>
<i>SAN PEDRO TERMINAL</i>	<i>1363 N GAFFEY ST</i>	<i>55-5,6</i>
<i>COPPA WOODWORKING</i>	<i>1231 PARAISO ST</i>	<i>61-5</i>
<i>BERTH 118-119</i>	<i>BERTH 118-119</i>	<i>62-6</i>
BERTH 87-90	110 N. HARBOR BLVD.	131-9
<i>WORLD OIL CO</i>	<i>210 S GAFFEY</i>	<i>144-8,9</i>
CROWLEY MARINE SERVICES INC	300 S HARBOR BLVD	147-9
SAN PEDRO BOATWORKS-BERTH 44	BERTH 44 OUTER HARBOR	314-13

## EXECUTIVE SUMMARY

NPDES: A listing of NPDES permits, including stormwater.

A review of the NPDES list, as provided by EDR, and dated 08/24/2010 has revealed that there are 19 NPDES sites within the searched area.

<u>Site</u>	<u>Address</u>	<u>Map ID</u>
27501 S WESTERN AVE	27501 S WESTERN AVE	5-2
HARBOR REPLACEMENT POLICE STAT	2175 JOHN S GIBSON BLVD	10-3
NORTH GAFFEY STREET BEAUTIFICA	1850 N GAFFEY ST	35-5
<b>LOS ANGELES HARBOR TERMINAL TA</b>	<b>1900 WILMINGTON-SAN PED</b>	<b>52-6</b>
<b>COPPA WOODWORKING</b>	<b>1231 PARAISO ST</b>	<b>61-5</b>
<b>BERTH 118-119</b>	<b>BERTH 118-119</b>	<b>62-6</b>
HARBOR ANIMAL SERVICES CTR	957 N GAFFEY ST	77-5
BERTH 121 131 TRAINSTAINER RUN	200 KNOLL DR	81-6
KNOLL HILL IMPROVEMENTS	FRONT ST & KNOLL DR	82-6
PECK PARK CANYON ENHANCEMENT P	560 N WESTERN AVE	100-5
BANDINI CANYON TRAIL PARK	417 N MEYLER ST	104-5
PENINSULA SAN PEDRO YMCA MASTE	301 S BANDINI ST	150-8
<b>BAYVIEW CLUB LLC</b>	<b>255 W 5TH ST</b>	<b>155-9</b>
CENTRE ST LOFTS	660 CENTRE ST	178-9
15TH STREET ELEMENTARY SCH	1527 SO MESA AVE	249-9
<b>TOXIC TREATMENTS USA</b>	<b>208 E 22ND ST</b>	<b>276-9</b>
CABRILLO WAY MARINA	22ND ST & MINER ST	276-9
<b>ANGELS GATE CHS</b>	<b>3200 S ALMA ST</b>	<b>328-12</b>
POINT FERMIN OUTDOOR EDUCATION	900 BARLOW SAXTON RD	332-12

WMUDS/SWAT: The Waste Management Unit Database System is used for program tracking and inventory of waste management units. The source is the State Water Resources Control Board.

A review of the WMUDS/SWAT list, as provided by EDR, and dated 04/01/2000 has revealed that there is 1 WMUDS/SWAT site within the searched area.

<u>Site</u>	<u>Address</u>	<u>Map ID</u>
AGAJANIAN, J.C.	1901 NORTH GAFFEY STREE	32-5

Cortese: The sites for the list are designated by the State Water Resource Control Board (LUST), the Integrated Waste Board (SWF/LS), and the Department of Toxic Substances Control (Cal-Sites). This listing is no longer updated by the state agency.

A review of the Cortese list, as provided by EDR, and dated 01/04/2011 has revealed that there are 2 Cortese sites within the searched area.

<u>Site</u>	<u>Address</u>	<u>Map ID</u>
<b>RICHARDS CLEANERS</b>	<b>538 WEST 5TH STREET</b>	<b>158-9</b>
<b>GATX ANNEX TERMINAL-SAN PEDRO</b>	<b>208 EAST 22ND STREET</b>	<b>276-9</b>

## EXECUTIVE SUMMARY

HIST CORTESE: The sites for the list are designated by the State Water Resource Control Board [LUST], the Integrated Waste Board [SWF/LS], and the Department of Toxic Substances Control [CALSTITES].

A review of the HIST CORTESE list, as provided by EDR, and dated 04/01/2001 has revealed that there are 36 HIST CORTESE sites within the searched area.

<u>Site</u>	<u>Address</u>	<u>Map ID</u>
<b>ROCKET #5</b>	<b>302 FIGUEROA</b>	<b>1-3</b>
<b>SOUTHERN CALIFORNIA GAS C</b>	<b>755 CAPITOL</b>	<b>45-5</b>
<b>OCEAN CHEVROLET</b>	<b>2175 JOHN GIBSON</b>	<b>58-6</b>
<b>PAUL IACONO STRUCTURAL EN</b>	<b>718 BATTERY</b>	<b>59-5,6</b>
<b>SAN PEDRO RENTALS</b>	<b>1303 GAFFEY ST N</b>	<b>60-5</b>
<b>CHEVRON STATION NO 99747</b>	<b>1105 N GAFFEY ST</b>	<b>70-5,6</b>
<b>ARCO #3069</b>	<b>701 CHANNEL</b>	<b>70-5,6</b>
<b>CHEVRON #9-8987</b>	<b>29421 WESTERN</b>	<b>84-5</b>
SHELL, WESTERN PLAZA	990 WESTERN	88-5
<b>TODD SHIPYARD</b>	<b>710 FRONT</b>	<b>90-6</b>
<b>WESTERN CLEANERS</b>	<b>29505 WESTERN AVE UNIT</b>	<b>92-5</b>
UNOCAL #5092	29701 WESTERN	103-5
<b>TEXACO SERVICE STATION</b>	<b>336 GAFFEY</b>	<b>117-5,6,8,9</b>
<b>UNOCAL #6174</b>	<b>311 GAFFEY</b>	<b>117-5,6,8,9</b>
<b>CHEVRON #9-8701</b>	<b>106 GAFFEY ST S</b>	<b>132-8,9</b>
<b>BILL SOUTH SERVICE</b>	<b>986 W FIRST ST</b>	<b>136-8</b>
<b>SHELL #204-6906-0790</b>	<b>987 001ST</b>	<b>136-8</b>
LOS ANGELES HARBOR BERTH	HARBOR BLVD	140-9
<b>WORLD OIL CO</b>	<b>210 S GAFFEY</b>	<b>144-8,9</b>
THRIFTY #264	301 PACIFIC	145-9
<b>DUKE DEVELOPMENT CORP</b>	<b>500 GAFFEY</b>	<b>159-8,9</b>
<b>PACIFIC BELL</b>	<b>460 W 5TH ST</b>	<b>162-9</b>
<b>SEVENTH STREET GARAGE</b>	<b>285 007TH</b>	<b>178-9</b>
<b>ARCO #5162</b>	<b>1490 07TH</b>	<b>180-8</b>
<b>SAN PEDRO MUNICIPAL BUILD</b>	<b>839 BEACON</b>	<b>202-9</b>
<b>HARBOR AUTO BODY</b>	<b>1106 PALOS VERDES</b>	<b>230-9</b>
SHELL	1631 PACIFIC	244-9
UNOCAL #0692 MARINE FACIL	78 BERTH	251-9
<b>MOBIL #11-MTD</b>	<b>1637 GAFFEY</b>	<b>253-8,9</b>
<b>THRIFTY #184</b>	<b>1706 GAFFEY</b>	<b>258-8,9</b>
<b>PORT OF LOS ANGELES</b>	<b>260 022ND</b>	<b>263-9</b>
HY-C-TANE TANK FARM	2186 SIGNAL PL	267-9
<b>GATX ANNEX TERMINAL-SAN PEDRO</b>	<b>208 EAST 22ND STREET</b>	<b>276-9</b>
COX OIL COMPANY	2010 PACIFIC	279-9,13
<b>BRAY TERMINAL</b>	<b>2115 GAFFEY</b>	<b>289-8,9,12,13</b>
FORT MACARTHUR ANNEX	2300 PACIFIC	302-13

SWRCY: A listing of recycling facilities in California.

A review of the SWRCY list, as provided by EDR, and dated 07/23/2010 has revealed that there are 4 SWRCY sites within the searched area.

<u>Site</u>	<u>Address</u>	<u>Map ID</u>
HABITAT RECYCLING	916 N WESTERN AVE	84-5
<b>MARKET RECYCLING INC</b>	<b>111 S PACIFIC AVE</b>	<b>134-9</b>
H J RECYCLING	303 S PACIFIC AVE	145-9
TOMRA PACIFIC INC	1636 W 25TH ST	298-12

## EXECUTIVE SUMMARY

LUST: The Leaking Underground Storage Tank Incident Reports contain an inventory of reported leaking underground storage tank incidents. The data come from the State Water Resources Control Board Leaking Underground Storage Tank Information System.

A review of the LUST list, as provided by EDR, and dated 10/28/2010 has revealed that there are 51 LUST sites within the searched area.

<u>Site</u>	<u>Address</u>	<u>Map ID</u>
<b>ROCKET #5</b> Status: Open - Site Assessment	<b>302 FIGUEROA</b>	<b>1-3</b>
<b>GREEN HILLS MEMORIAL PARK</b> Status: Completed - Case Closed	<b>27501 WESTERN AVE S</b>	<b>5-2</b>
<b>YANG MING CONTAINER TERMINAL</b> Status: Completed - Case Closed	<b>2050 JOHN S. GIBSON BLV</b>	<b>11-3</b>
<b>SOUTHERN CALIFORNIA GAS C</b> Status: Completed - Case Closed	<b>755 CAPITOL</b>	<b>45-5</b>
HARBOR DISTRICT FACILITIES Status: Open - Remediation	1400 GAFFEY ST N	55-5,6
<b>OCEAN CHEVROLET</b> Status: Completed - Case Closed	<b>2175 JOHN GIBSON</b>	<b>58-6</b>
<b>PAUL IACONO STRUCTURAL EN</b> Status: Completed - Case Closed	<b>718 BATTERY</b>	<b>59-5,6</b>
<b>SAN PEDRO RENTALS</b> Status: Completed - Case Closed	<b>1303 GAFFEY ST N</b>	<b>60-5</b>
CHEVRON #9-9747 Status: Completed - Case Closed	1105 GAFFEY ST N	70-5,6
<b>ARCO #3069</b> Status: Completed - Case Closed	<b>701 CHANNEL</b>	<b>70-5,6</b>
SHELL SERVICE STATION Status: Open - Site Assessment	990 WESTERN AVE N	79-5
<b>SHELL STATION NO 204-6906-0105</b> Status: Completed - Case Closed	<b>900 N WESTERN</b>	<b>84-5</b>
<b>CHEVRON #9-8987</b> Status: Completed - Case Closed	<b>29421 WESTERN</b>	<b>84-5</b>
MOBIL Status: Completed - Case Closed	29505 WESTERN AVE	92-5
<b>CHEVRON STATION #9-8649</b> Status: Completed - Case Closed	<b>40 MIRALESTE PLAZA</b>	<b>98-4</b>
<b>UNOCAL #5092</b> Status: Completed - Case Closed	<b>29701 WESTERN AVE S</b>	<b>103-5</b>
LEE'S SERVICE - CLOSED Status: Open - Remediation	335 GAFFEY ST. N.	117-5,6,8,9
<b>TEXACO SERVICE STATION</b> Status: Completed - Case Closed	<b>336 GAFFEY</b>	<b>117-5,6,8,9</b>
<b>UNOCAL #6174</b> Status: Completed - Case Closed	<b>311 GAFFEY</b>	<b>117-5,6,8,9</b>
<b>CHEVRON #9-8701</b> Status: Open - Site Assessment	<b>106 GAFFEY ST S</b>	<b>132-8,9</b>
<b>BILL SOUTH SERVICE</b> Status: Open - Verification Monitoring	<b>986 W FIRST ST</b>	<b>136-8</b>



## EXECUTIVE SUMMARY

<u>Site</u>	<u>Address</u>	<u>Map ID</u>
SHELL Status: Open - Site Assessment	987 1ST ST. W	136-8
<b>SHELL #204-6906-0790</b> Status: Completed - Case Closed	<b>987 001ST</b>	<b>136-8</b>
<b>WORLD OIL CO</b> Status: Open - Remediation	<b>210 S GAFFEY</b>	<b>144-8,9</b>
ARCO #9656 THRIFTY #264 Status: Completed - Case Closed	302 PACIFIC S. 302 PACIFIC AVE S	145-9 145-9
THRIFTY #264 <b>DUKE DEVELOPMENT CORP</b> Status: Completed - Case Closed	301 PACIFIC AVE S <b>500 GAFFEY</b>	145-9 <b>159-8,9</b>
<b>PACIFIC BELL</b> Status: Completed - Case Closed	<b>460 W 5TH ST</b>	<b>162-9</b>
<b>SEVENTH STREET GARAGE</b> Status: Completed - Case Closed	<b>285 007TH</b>	<b>178-9</b>
<b>ARCO #5162</b> Status: Completed - Case Closed	<b>1490 07TH</b>	<b>180-8</b>
<b>SAN PEDRO CAR WASH</b> Status: Open - Remediation	<b>735 S GAFFEY ST</b>	<b>187-8,9</b>
PCBNA BRANCH OFFICE Status: Completed - Case Closed	740 GAFFEY ST	187-8,9
LAUSD HARBOR OCCUPATIONAL CENT Status: Completed - Case Closed	740 PACIFIC AVE.	196-9
<b>SAN PEDRO MUNICIPAL BUILD</b> Status: Open - Inactive	<b>839 BEACON</b>	<b>202-9</b>
<b>HARBOR AUTO BODY</b> Status: Open - Site Assessment	<b>1106 PALOS VERDES</b>	<b>230-9</b>
SHELL SERVICE STATION (FORMER) Status: Completed - Case Closed	1631 PACIFIC AVE.	244-9
<b>SHELL SERVICE STATION 136043</b> Status: Completed - Case Closed	<b>1631 W PACIFIC</b>	<b>244-9</b>
GAFFEY AND FIFTEENTH ASSOCIATE Status: Completed - Case Closed	1500-1510 GAFFEY ST S.	246-8,9
CIREG Status: Completed - Case Closed	1503 CENTRE ST. S.	248-9
UNOCAL #0692 MARINE FACILITY Status: Completed - Case Closed Status: Open - Remediation	78 BERTH	251-9
<b>MOBIL #11-MTD</b> Status: Completed - Case Closed	<b>1637 GAFFEY</b>	<b>253-8,9</b>
THRIFTY #184 Status: Completed - Case Closed	1706 GAFFEY ST S	258-8,9
<b>PORT OF LOS ANGELES</b> Status: Completed - Case Closed	<b>260 022ND</b>	<b>263-9</b>
GOOD AUTOMOTIVE SERVICE GOOD AUTOMOTIVE SERVICE Status: Completed - Case Closed	2010 PACIFIC AVE 2010 S PACIFIC AVE	279-9,13 279-9,13

## EXECUTIVE SUMMARY

<u>Site</u>	<u>Address</u>	<u>Map ID</u>
GSV - SAN PEDRO BUSINESS CENTE <b>BRAY TERMINAL</b> Status: Completed - Case Closed	2100 GAFFEY ST <b>2115 GAFFEY</b>	283-8,9,12,13 <b>289-8,9,12,13</b>
MOBIL 18-MVM Status: Open - Remediation	2490 WESTERN AVE. S.	298-12
<b>Not reported</b> Status: Open - Remediation	<b>210 WHALERS WALK</b>	<b>323-13</b>
STATE OF CALIF - DEPT OF REC A Status: Open - Site Assessment	3601 S GAFFEY ST	342-12,13

CA FID UST: The Facility Inventory Database contains active and inactive underground storage tank locations. The source is the State Water Resource Control Board.

A review of the CA FID UST list, as provided by EDR, and dated 10/31/1994 has revealed that there are 109 CA FID UST sites within the searched area.

<u>Site</u>	<u>Address</u>	<u>Map ID</u>
<b>GARIN OIL COMPANY #5</b>	<b>302 N FIGUEROA ST</b>	<b>1-3</b>
<b>TRANSIT CONTRACTS</b>	<b>221 MAR VISTA</b>	<b>2-3</b>
<b>GREEN HILLS MEMORIAL PARK</b>	<b>27501 WESTERN AVE S</b>	<b>5-2</b>
<b>HARBOR POLICE STATION</b>	<b>2175 W JOHN S GIBSON BL</b>	<b>10-3</b>
<b>AMERICAN PRESIDENT LINES, LTD</b>	<b>2050 W JOHN S GIBSON BL</b>	<b>11-3</b>
UNITED STATES OF AMERICA- <b>GAUDENTI CORP</b>	27812 WESTERN AVE <b>2215 N GAFFEY ST</b>	13-2 <b>16-2,5</b>
<b>BRAY TERMINAL</b>	<b>2115 N GAFFEY ST</b>	<b>22-5</b>
<b>AMERIGAS PROPANE L.P.</b>	<b>2110 N GAFFEY ST</b>	<b>22-5</b>
<b>GAFFEY STREET VENTURES</b>	<b>2100 N GAFFEY ST</b>	<b>22-5</b>
PORT OF LOS ANGELES	1830 JOHN S GIBSON BLVD	24-6
<b>TARGET CORP</b>	<b>1701 N GAFFEY ST</b>	<b>43-5,6</b>
<b>SOUTHERN CALIFORNIA GAS C</b>	<b>755 CAPITOL</b>	<b>45-5</b>
METAL TRANSPORT, INCORPORATED	1441 N GAFFEY ST	51-5,6
<b>GAIX TANK STORAGE TERMINALS</b>	<b>1900 W WILMINGTON RD</b>	<b>52-6</b>
<b>WESTERN FUEL OIL CO</b>	<b>BERTH 120</b>	<b>52-6</b>
<b>CITY OF LA GENERAL SERVICES</b>	<b>1400 N GAFFEY ST</b>	<b>55-5,6</b>
<b>KINDER MORGAN ENERGY PARTNERS</b>	<b>1363 N GAFFEY ST</b>	<b>55-5,6</b>
<b>LA HARBOR</b>	<b>1400 N GAFFEY ST</b>	<b>55-5,6</b>
SAN PEDRO RENTALS INCORPORATED	1303 N GAFFEY ST	59-5,6
<b>MEMORIAL PARK DEVEL ASSN INC</b>	<b>718 BATTERY ST</b>	<b>59-5,6</b>
<b>HARBOR ANIMAL SHELTER</b>	<b>735 BATTERY ST</b>	<b>59-5</b>
ED'S SMOG SHOP	1241 PARAISO ST	61-5
<b>TUNEUP MASTERS INC. #0023</b>	<b>1050 N PACIFIC AVE</b>	<b>67-6</b>
<b>BP WEST COAST PRODUCTS LLC 030</b>	<b>701 W CHANNEL ST</b>	<b>70-5,6</b>
<b>HURST SERVICE ROOFING INC</b>	<b>770 MIRAFLORES AVE</b>	<b>77-5</b>
<b>ART YUNG DESIGNS INC</b>	<b>811 MIRAFLORES ST</b>	<b>77-5</b>
<b>CAL-GA-CRETE INDUSTRIES INC</b>	<b>803 MIRAFLORES AVE</b>	<b>77-5</b>
<b>U S NET/BATTING CAGE CO INC</b>	<b>819 MIRAFLORES AVE</b>	<b>77-5</b>
<b>LAUSD/HARBOR OCCUPATIONAL CENT</b>	<b>740 N PACIFIC AVE</b>	<b>86-6</b>
<b>CHEVRON U.S.A. INC, MARINE TER</b>	<b>1510 N SWINFORD ST</b>	<b>89-6</b>
<b>TODD PACIFIC SHIPYARDS CORPORA</b>	<b>710 N FRONT ST</b>	<b>90-6</b>
MOBIL OIL CORP	29505 S WESTERN AVE	92-5
<b>LOUISIANA-PACIFIC CORP YARD</b>	<b>515 N BEACON ST</b>	<b>105-6</b>

## EXECUTIVE SUMMARY

Site	Address	Map ID
FENTIS SUPPLY CORP	503 N HARKER ST	108-6
DEPT OF REC/PARKS	1430 SUMMERLAND AVE	113-5,8
<b>LOS ANGELES FIRE STATION 53</b>	<b>438 N MESA ST</b>	<b>115-6,9</b>
<b>SUN KYUNG KIM SHELL STATION</b>	<b>406 N GAFFEY ST</b>	<b>117-5,6,8,9</b>
<b>BEACON</b>	<b>335 N GAFFEY</b>	<b>117-5,6,8,9</b>
<b>TEXACO SERVICE STATION</b>	<b>336 GAFFEY</b>	<b>117-5,6,8,9</b>
UNOCAL SERVICE STATION #6174	311 N GAFFEY ST	117-5,6,8,9
<b>LEONARD/ANGELKA BARIC/VICTOR/N</b>	<b>340 N PACIFIC AVE</b>	<b>120-6,9</b>
<b>MIKE &amp; JOE'S AUTO GARAGE</b>	<b>303 N PACIFIC AVE</b>	<b>120-9</b>
<b>LOS ANGELES MARINE HARDWARE</b>	<b>345 N BEACON ST</b>	<b>121-6,9</b>
<b>MARHOLZ CHEVRON</b>	<b>106 S GAFFEY ST</b>	<b>132-8,9</b>
<b>MARKET RECYCLING INC</b>	<b>111 S PACIFIC AVE</b>	<b>134-9</b>
<b>NEIGHBORHOOD SHELL</b>	<b>987 W 1ST ST</b>	<b>136-8</b>
<b>HARBOR DISTRICT YARD</b>	<b>950 W 1ST ST</b>	<b>137-8</b>
<b>TOM ANAST</b>	<b>100 W 1ST ST</b>	<b>140-9</b>
<b>WORLD OIL CO</b>	<b>210 S GAFFEY</b>	<b>144-8,9</b>
<b>CARLOS 3RD ST GARAGE</b>	<b>302 S PACIFIC AVE</b>	<b>145-9</b>
THRIFTY OIL STATION #264	320 S PACIFIC AVE	145-9
<b>PETERSO CONSTRUCTION</b>	<b>334 S PACIFIC AVE</b>	<b>145-9</b>
PORT OF LOS ANGELES	351 S HARBOR BLVD	147-9
<b>HARBOR SHIP SUPPLY</b>	<b>422 W 4TH ST</b>	<b>152-9</b>
<b>SAN PEDRO HARBOR SHIP</b>	<b>401 S MESA ST</b>	<b>152-9</b>
<b>SUPREME PAINT CORPORATION</b>	<b>505 S PACIFICA AVE</b>	<b>158-9</b>
<b>DUKE DEVELOPMENT CORP</b>	<b>500 GAFFEY</b>	<b>159-8,9</b>
<b>PACIFIC BELL</b>	<b>460 W 5TH ST</b>	<b>162-9</b>
<b>PACIFIC BELL</b>	<b>425 W 5TH ST</b>	<b>163-9</b>
SAN PEDRO SIGNAL	501 S MESA	163-9
<b>PACIFIC PLACE ASSOCIATES INC</b>	<b>222 W 6TH ST</b>	<b>165-9</b>
<b>BEACON STREET HOTEL ASSOCIATIO</b>	<b>601 S PALOS VERDES ST</b>	<b>165-9</b>
<b>UNK</b>	<b>576 W 6TH ST</b>	<b>170-9</b>
<b>SAN PEDRO MUNICIPAL BLDG</b>	<b>638 S BEACON ST</b>	<b>177-9</b>
<b>7TH STREET GARAGE INCORPORATED</b>	<b>285 W 7TH ST</b>	<b>178-9</b>
<b>ATLANTIC RICHFIELD CO</b>	<b>1490 W 7TH ST</b>	<b>180-8</b>
PAT FUNICELLO	700 S GAFFEY ST	187-8,9
SAN PEDRO CAR WASH	735 S GAFFEY ST	187-8,9
<b>SAN PEDRO MUNICIPAL BUILD</b>	<b>839 BEACON</b>	<b>202-9</b>
<b>YAND CHAE CHUNG</b>	<b>900 PACIFIC AVE</b>	<b>210-9</b>
<b>RAY DEETER TIRETOWN INC</b>	<b>1024 S PACIFIC AVE</b>	<b>217-9</b>
<b>RAY DEETER TIRE TOWN INC</b>	<b>1030 S PACIFIC AVE</b>	<b>217-9</b>
<b>OLLA BEVERLY</b>	<b>1001 S GAFFEY ST</b>	<b>219-8,9</b>
<b>FRANK'S AUTO SERVICE</b>	<b>1103 S MEYLER ST</b>	<b>228-8</b>
AUTO PARTS SERVICE	1106 S GAFFEY ST	229-8,9
<b>DALCIN CUMMINS ASSOCIATES</b>	<b>1236 S PACIFIC AVE</b>	<b>233-9</b>
<b>PACIFIC BODY SHOP</b>	<b>1437 S PACIFIC AVE</b>	<b>244-9</b>
<b>SODERSTROM ENTERPRISES INC</b>	<b>1506 S PACIFIC AVE</b>	<b>244-9</b>
<b>MODERN BRAKE &amp; AUTOMOTIVE</b>	<b>1530 S PACIFIC AVE</b>	<b>244-9</b>
<b>Y &amp; S AUTO BODY SHOP</b>	<b>1553 S PACIFIC AVE</b>	<b>244-9</b>
<b>INTERNATIONAL MOTORS</b>	<b>1600 S PACIFIC AVE</b>	<b>244-9</b>
<b>GOJKO SPRALJA</b>	<b>1631 S PACIFIC AVE</b>	<b>244-9</b>
<b>SANG HYUN LEE</b>	<b>1704 S PACIFIC AVE</b>	<b>244-9</b>
<b>TEXACO INC</b>	<b>1500 S GAFFEY ST</b>	<b>246-8,9</b>
UNKNOWN	1503 S CENTRE	248-9
<b>MOBIL SERVICE STATION 11 MTD</b>	<b>1637 S GAFFEY ST</b>	<b>253-8,9</b>
<b>LOS ANGELES FIRE STA 48</b>	<b>1601 S GRAND AVE</b>	<b>255-9</b>
<b>BP WEST COAST PRODUCTS LLC 096</b>	<b>1706 S GAFFEY ST</b>	<b>258-8,9</b>
THURSTON J SCHULTZ	1739 S GAFFEY ST	261-8,9

## EXECUTIVE SUMMARY

<u>Site</u>	<u>Address</u>	<u>Map ID</u>
<b>T &amp; A GARAGE</b>	<b>1750 S PACIFIC AVE</b>	<b>262-9</b>
<b>PALOS VERDES SHORES MOBILE EST</b>	<b>2275 W 25TH ST</b>	<b>268-7</b>
<b>SOUTH BAY AUTO BODY</b>	<b>1831 S PACIFIC</b>	<b>270-9</b>
<b>MORSE DRIVE PUMP STATION</b>	<b>1603 W MORSE DR</b>	<b>271-8</b>
<b>JOE &amp; MIKE GOOD AUTO</b>	<b>2010 S PACIFIC AVE</b>	<b>279-9,13</b>
<b>LITTLE SISTERS OF THE POOR</b>	<b>2100 S WESTERN AVE</b>	<b>281-8,12</b>
<b>FISH MARKET</b>	<b>402 W 21ST ST</b>	<b>284-9,13</b>
<b>STANLEY D. MEGLIO</b>	<b>403 W 21ST ST</b>	<b>284-9,13</b>
L A UNIFIED SCHOOL DISTRICT	2120 S LELAND ST	286-8,12
<b>UNION HARBOR STATION</b>	<b>200 W 22ND ST</b>	<b>291-13</b>
<b>UNOCAL CORP.</b>	<b>PIER 78</b>	<b>294-13</b>
<b>SOUTH SHORES CHEVRON</b>	<b>1660 W 25TH ST</b>	<b>298-12</b>
<b>GUILTY M SEIF/HAMID KHORSAN</b>	<b>1603 W 25TH ST</b>	<b>298-12</b>
<b>EXXONMOBIL OIL CORP 13106</b>	<b>2490 S WESTERN AVE</b>	<b>298-12</b>
<b>TIERRA VISTA COMMUNITIES</b>	<b>2400 S PACIFIC AVE</b>	<b>303-13</b>
DEPARTMENT OF AIR FORCE	2434 S PACIFIC AVE	303-13
FIRE STATION 101	1414 W 25TH ST	309-12
CABRILLO MARINE FUEL	210 WHALERS WALK BERTH	323-13
POINT FERMIN PARK	807 W PASEO DEL MAR	347-12

SLIC: SLIC Region comes from the California Regional Water Quality Control Board.

A review of the SLIC list, as provided by EDR, and dated 10/28/2010 has revealed that there are 13 SLIC sites within the searched area.

<u>Site</u>	<u>Address</u>	<u>Map ID</u>
<b>BRAY TERMINAL</b>	<b>2115 N GAFFEY ST</b>	<b>22-5</b>
Facility Status: Completed - Case Closed		
<b>WESTERN FUEL OIL CO</b>	<b>2100 N GAFFEY</b>	<b>22-5</b>
WESTERN FUEL OIL CO	2100 N. GAFFEY AVE	22-5
Facility Status: Open - Site Assessment		
GATX - LA HARBOR TERMINAL (BER	1900 SAN PEDRO ROAD	62-6
Facility Status: Open - Remediation		
PORT OF LOS ANGELES - TODD SHI	100 REGAN	85-6
PORT OF LOS ANGELES - TODD SHI	100 REGAN ST.	85-6
Facility Status: Open - Site Assessment		
FORMER CHEVRON MARINE TERMINAL	1510 SWINFORD STREET	89-6
Facility Status: Open - Assessment & Interim Remedial Action		
BP OIL CO.	100 S. SEASIDE AVE	164-9
Facility Status: Completed - Case Closed		
<b>PORT OF LOS ANGELES - WAREHOUS</b>	<b>260 E. 22ND STREET</b>	<b>275-9</b>
Facility Status: Open - Assessment & Interim Remedial Action		
PORT OF LOS ANGELES - HY C TAN	2300 SIGNAL	278-9,13
PORT OF LOS ANGELES - HY C TAN	2300 SIGNAL ST	278-9,13
Facility Status: Open - Site Assessment		
UNOCAL - HARBOR PUMP STATION	200 022ND	282-9,13
<b>BRAY TERMINAL</b>	<b>2115 GAFFEY</b>	<b>289-8,9,12,13</b>

## EXECUTIVE SUMMARY

UST: The Underground Storage Tank database contains registered USTs. USTs are regulated under Subtitle I of the Resource Conservation and Recovery Act (RCRA). The data come from the State Water Resources Control Board's Hazardous Substance Storage Container Database.

A review of the UST list, as provided by EDR, and dated 12/16/2010 has revealed that there are 44 UST sites within the searched area.

<u>Site</u>	<u>Address</u>	<u>Map ID</u>
<b>PALOS VERDES CHLORINATION STA</b>	<b>2093 AVENIDA FELICIANO</b>	<b>8-1</b>
HARBOR POLICE STATION	2175 JOHN S GIBSON BLVD	10-3
YANG MING	2050 JOHN S GIBSON BLVD	11-3
INTERSTATE BRANDS CORPORATION	1701 N GAFFEY ST	43-5,6
<b>SO CALIFORNIA GAS COMPANY</b>	<b>755 W CAPITOL DR</b>	<b>45-5</b>
GAFFEY STREET YARD	1400 N GAFFEY ST	55-5,6
CHEVRON STATION #9-9747	1105 N GAFFEY ST	70-5,6
ARCO SS# 3069	701 W CHANNEL ST	70-5,6
TOM ACCETA	780 W CHANNEL ST	71-5
HARBOR CAR WASH TEXACO	777 MIRAFLORES	77-5
<b>PARK PLAZA SHELL</b>	<b>990 N WESTERN AVE</b>	<b>79-5</b>
<b>CHEVRON USA SS 098987</b>	<b>29421 S WESTERN AVE</b>	<b>84-5</b>
<b>HARBOR OCCUPATIONAL/CENTER</b>	<b>740 N PACIFIC AVE</b>	<b>86-6</b>
LA CO FD FIRE STA #083	83 MIRALESTE PLZ	98-4
CHEVRON USA SS 098649	40 MIRALESTE PLZ	98-4
<b>SAN PEDRO SIGNAL</b>	<b>501 N MESA ST</b>	<b>111-6</b>
SAN PEDRO SHELL	406 N GAFFEY ST	117-5,6,8,9
STEPHEN AND MARY KASTELAN	303 N PACIFIC AVE	120-9
CHEVRON STATION #9-8701	106 S GAFFEY ST	132-8,9
NEIGHBORHOOD SHELL	987 W 1ST ST	136-8
<b>HARBOR DISTRICT YARD</b>	<b>950 W 1ST ST</b>	<b>137-8</b>
ARCO #9656	302 S PACIFIC AVE	145-9
LOS ANGELES FIRE STATION 112	444 S HARBOR BLVD	147-9
LOS ANGELES HARBOR DEPARTMENT	425 S PALOS VERDES ST	155-9
TEXACO	500 S GAFFEY ST	159-8,9
<b>PACIFIC BELL</b>	<b>460 W 5TH ST</b>	<b>162-9</b>
<b>PACIFIC BELL/C</b>	<b>425 W 5TH ST</b>	<b>163-9</b>
PACIFIC PLACE	222 W 6TH ST	165-9
SHERATON LA HARBOR HOTEL	601 S PALOS VERDES ST	165-9
ARCO FAC. #5162	1490 W 7TH ST	180-8
<b>SAN PEDRO CAR WASH</b>	<b>735 S GAFFEY ST</b>	<b>187-8,9</b>
SPRALJA'S SHELL SERVICE	1631 S PACIFIC AVE	244-9
MOBIL SS# 11-MTD	1637 S GAFFEY ST	253-8,9
<b>LOS ANGELES FIRE STATION 48</b>	<b>1601 S GRAND AVE</b>	<b>255-9</b>
FIRE STATION 112	1 BERTH # 86	256-9
ARCO # 9606	1706 S GAFFEY ST	258-8,9
<b>MORSE DRIVE PUMP STATION</b>	<b>1603 MORSE DR</b>	<b>271-8</b>
LITTLE SISTERS OF THE POOR OF L	2100 S WESTERN AVE	281-8,12
CHEVRON STATION #9-7864	1660 W 25TH ST	298-12
TOSCO CORPORATION #30603	1603 W 25TH ST	298-12
MOBIL OIL	2490 S WESTERN AVE	298-12
<b>DEPARTMENT OF AIR FORCE</b>	<b>2434 S PACIFIC AVE</b>	<b>303-13</b>
<b>LOS ANGELES FIRE STATION 101</b>	<b>1414 W 25TH ST</b>	<b>309-12</b>
CABRILLO MARINE FUEL	210 WHALERS WALK	323-13

## EXECUTIVE SUMMARY

HIST UST: Historical UST Registered Database.

A review of the HIST UST list, as provided by EDR, and dated 10/15/1990 has revealed that there are 79 HIST UST sites within the searched area.

<u>Site</u>	<u>Address</u>	<u>Map ID</u>
GARIN OIL COMPANY #5	302 FIGUEROA ST	1-3
<b>GREEN HILLS MEMORIAL PARK</b>	<b>27501 S WESTERN AVE</b>	<b>9-2</b>
HARBOR POLICE STATION GARAGE	2175 JOHN S GIBSON BLVD	10-3
<b>AMERICAN PRESIDENT LINES, LTD.</b>	<b>2050 JOHN S GIBSON BLVD</b>	<b>11-3</b>
GAUDENTI & SONS LANDSCAPING CO	2215 N GAFFEY ST	16-2,5
BAY TERMINAL	2115 N GAFFEY ST	22-5
PETROLANE MARINE TERMINAL	2110 N GAFFEY ST	22-5
DICARLO BAKING COMPANY	1701 N GAFFEY ST	43-5,6
SAN PEDRO	755 W CAPITOL DR	45-5
METAL TRANSPORT INC.	1441 N GAFFEY ST	51-5,6
GATX TERMINALS - SAN PEDRO	BERTH 70/71 SIGNAL STRE	52-6
GATX TANK STORAGE TERMINALS L.	1900 WILLINGTON SAN PED	52-6
HARBOR STREET MAINTENANCE YARD	1400 N GAFFEY ST	55-5,6
HARBOR DISTRICT CONSOLIDATED F	1400 N GAFFEY ST	55-5,6
BP NORTH AMERICA TRADING INC.	1363 N GAFFEY ST	55-5,6
HARBOR ANIMAL SHELTER	735 BATTERY STREET	59-5
<b>99747</b>	<b>1105 N GAFFEY ST</b>	<b>70-5,6</b>
KWANG HEE LEE	701 W CHANNEL ST	70-5,6
FRED NAJMI	990 N WESTERN AVE	79-5
THRIFTY OIL STN. #263	29409 S. WESTERN AVENUE	84-5
<b>98987</b>	<b>29421 S WESTERN AVE</b>	<b>84-5</b>
<b>HARBOR OCCUPATIONAL/CENTER</b>	<b>740 N PACIFIC AVE</b>	<b>86-6</b>
HARBOR OCCUPATIONAL CENTER	740 N PACIFIC AVE	86-6
SAN PEDRO MARINE TERMINAL	1510 SWINFORD ST	89-6
<b>TODD PACIFIC SHIPYARDS CORPORA</b>	<b>710 N FRONT ST</b>	<b>90-6</b>
BOK JA CHAE	29505 S. WESTERN AVE.	92-5
FIRE STATION # 83	4000 MIRALESTE DR	95-4
<b>98649</b>	<b>40 MIRALESTE PLZ</b>	<b>98-4</b>
UNION OIL SERVICE STATION #509	29701 SOUTH WESTERN AVE	103-5
SERVICE STATION 5092	29701 S WESTERN AVE	103-5
LOUISIANA-PACIFIC CORP. YARD 0	515 N BEACON ST	105-6
LOUISIANA-PACIFIC CORP.	515 N BEACON ST	105-6
FIRE STATION 53	438 N MESA ST	115-6,9
PYUNG SUN KIM	406 N GAFFEY ST	117-5,6,8,9
AUTO MAT #3	335 N GAFFEY ST	117-5,6,8,9
SERVICE STATION 6174	311 N GAFFEY ST	117-5,6,8,9
98701	106 S GAFFEY ST	132-8,9
BILL SOUTH TEXACO	986 W 1ST ST	136-8
<b>NEIGHBORHOOD SHELL</b>	<b>987 W 1ST ST</b>	<b>136-8</b>
<b>JO RYAN &amp; HALLDIS MOSTREM</b>	<b>987 W 1ST ST</b>	<b>136-8</b>
<b>HARBOR DISTRICT YARD</b>	<b>950 W 1ST ST</b>	<b>137-8</b>
WORLD OIL MARKETING CO. #28	210 S GAFFEY ST	144-8,9
THRIGTY OIL STN. #264	320 S PACIFIC AVE	145-9
SAN PEDRO HARBOR SHIP SUPPLY	426 W 4TH ST	152-9
<b>HARBOR ADMINISTRATION BUILDING</b>	<b>425 S PALOS VERDES ST</b>	<b>155-9</b>
G & N ARCO SERVICE	500 S GAFFEY ST	159-8,9
<b>PACIFIC BELL</b>	<b>460 W 5TH ST</b>	<b>162-9</b>
VERN'S TUNE UP & BRAKE CENTER	408 W 5TH ST	163-9
PACIFIC BELL (A4-109)	425 W 5TH ST	163-9
SAN PEDRO MUNICIPAL BUILDING	638 SO. BEACON ST., SAN	177-9
GEORGE L GIBBY	1490 W 7TH ST	180-8
<b>SAN PEDRO CAR WASH</b>	<b>735 S GAFFEY ST</b>	<b>187-8,9</b>

## EXECUTIVE SUMMARY

<u>Site</u>	<u>Address</u>	<u>Map ID</u>
U.S. POSTAL SERVICE - SAN PEDR	839 S BEACON ST	202-9
UNION OIL SERVICE STATION #257	900 S PACIFIC AVE	210-9
SERVICE STATION 2575	900 S PACIFIC AVE	210-9
OLLA BEVERLY	1001 S GAFFEY ST	219-8,9
92750	1306 S GAFFEY ST	238-8,9
DOLORES SODERSTROM	1500 S PACIFIC AVE	244-9
SPRALJA'S SHELL SERVICE	1631 S PACIFIC AVE	244-9
GOJKO SPRALJA	1631 S PACIFIC AVE	244-9
ARCO SERVICE STATION	1704 S PACIFIC AVE	244-9
SANG HYUN LEE	1704 S PACIFIC AVE	244-9
CHAN KEE CHAE	1637 S GAFFEY ST	253-8,9
FIRE STATION # 48	1601 S GRAND AVE	255-9
THRIFTY OIL STN. #184	1706 GAFFEY	258-8,9
T&A GARAGE	1750 S PACIFIC AVE	262-9
<b>MORSE DRIVE PUMP STATION</b>	<b>1603 MORSE DR</b>	<b>271-8</b>
STEVEDORING SERVICES OF AMERIC	220 E 22ND ST	276-9
<b>JOE &amp; MIKE GOOD AUTO</b>	<b>2010 S PACIFIC AVE</b>	<b>279-9,13</b>
<b>HARBOR STATION</b>	<b>200 W 22ND ST</b>	<b>291-13</b>
97864	1660 W 25TH ST	298-12
SERVICE STATION 4061	1603 W 25TH ST	298-12
UNION OIL SERVICE STATION #406	1603 W 25TH ST	298-12
JACK RIPS	2490 S WESTERN AVE	298-12
FORT MACARTHUR HOUSING ANNEX	2400 S PACIFIC AVE	303-13
FIRE STATION 101	1414 W 25TH ST	309-12
<b>MIKES MARINE</b>	<b>210 WHALERS WALK BERTH</b>	<b>323-13</b>
SUPERTANKER TERMINAL BERTHS 45	BERTH 46, MINER ST.	336-13
PT. FERMIN PARK	807 W PASEO DEL MAR	347-12

SWEEPS UST: Statewide Environmental Evaluation and Planning System. This underground storage tank listing was updated and maintained by a company contacted by the SWRCB in the early 1990's. The listing is no longer updated or maintained. The local agency is the contact for more information on a site on the SWEEPS list.

A review of the SWEEPS UST list, as provided by EDR, and dated 06/01/1994 has revealed that there are 96 SWEEPS UST sites within the searched area.

<u>Site</u>	<u>Address</u>	<u>Map ID</u>
<b>GARIN OIL COMPANY #5</b>	<b>302 N FIGUEROA ST</b>	<b>1-3</b>
<b>TRANSIT CONTRACTS</b>	<b>221 MAR VISTA</b>	<b>2-3</b>
<b>GREEN HILLS MEMORIAL PARK</b>	<b>27501 WESTERN AVE S</b>	<b>5-2</b>
<b>HARBOR POLICE STATION</b>	<b>2175 W JOHN S GIBSON BL</b>	<b>10-3</b>
<b>AMERICAN PRESIDENT LINES, LTD</b>	<b>2050 W JOHN S GIBSON BL</b>	<b>11-3</b>
<b>GAUDENTI CORP</b>	<b>2215 N GAFFEY ST</b>	<b>16-2,5</b>
<b>BRAY TERMINAL</b>	<b>2115 N GAFFEY ST</b>	<b>22-5</b>
<b>TARGET CORP</b>	<b>1701 N GAFFEY ST</b>	<b>43-5,6</b>
<b>SO CALIFORNIA GAS COMPANY</b>	<b>755 W CAPITOL DR</b>	<b>45-5</b>
<b>GAIX TANK STORAGE TERMINALS</b>	<b>1900 W WILMINGTON RD</b>	<b>52-6</b>
<b>TEXACO OIL CORP</b>	<b>28821 S WESTERN AVE</b>	<b>53-5</b>
<b>CITY OF LA GENERAL SERVICES</b>	<b>1400 N GAFFEY ST</b>	<b>55-5,6</b>
<b>MEMORIAL PARK DEVEL ASSN INC</b>	<b>718 BATTERY ST</b>	<b>59-5,6</b>
<b>HARBOR ANIMAL SHELTER</b>	<b>735 BATTERY ST</b>	<b>59-5</b>
<b>TUNEUP MASTERS INC. #0023</b>	<b>1050 N PACIFIC AVE</b>	<b>67-6</b>
<b>99747</b>	<b>1105 N GAFFEY ST</b>	<b>70-5,6</b>

## EXECUTIVE SUMMARY

Site	Address	Map ID
<b>BP WEST COAST PRODUCTS LLC 030</b>	<b>701 W CHANNEL ST</b>	<b>70-5,6</b>
<b>HURST SERVICE ROOFING INC</b>	<b>770 MIRAFLORES AVE</b>	<b>77-5</b>
<b>ART YUNG DESIGNS INC</b>	<b>811 MIRAFLORES ST</b>	<b>77-5</b>
<b>CAL-GA-CRETE INDUSTRIES INC</b>	<b>803 MIRAFLORES AVE</b>	<b>77-5</b>
<b>U S NET/BATTING CAGE CO INC</b>	<b>819 MIRAFLORES AVE</b>	<b>77-5</b>
<b>CAL-GA-CRETE INDUSTRIES INC</b>	<b>803 W MIRAFLORES AVE</b>	<b>77-5</b>
<b>JOE MULLENAUX/ BRANDT DEV</b>	<b>29409 WESTERN AVE</b>	<b>84-5</b>
<b>98987</b>	<b>29421 S WESTERN AVE</b>	<b>84-5</b>
<b>HARBOR OCCUPATIONAL/CENTER</b>	<b>740 N PACIFIC AVE</b>	<b>86-6</b>
<b>MOBIL OIL CORP</b>	<b>29505 S WESTERN AVE</b>	<b>92-5</b>
<b>MARK C BLOOME</b>	<b>29529 S WESTERN AVE</b>	<b>92-5</b>
<b>98649</b>	<b>40 MIRALESTE PLZ</b>	<b>98-4</b>
<b>UNOCAL - 76</b>	<b>29701 S WESTERN AVE</b>	<b>103-5</b>
<b>UNOCAL #5092</b>	<b>29701 WESTERN AVE S</b>	<b>103-5</b>
<b>LOUISIANA-PACIFIC CORP YARD</b>	<b>515 N BEACON ST</b>	<b>105-6</b>
<b>SAN PEDRO SIGNAL</b>	<b>501 N MESA ST</b>	<b>111-6</b>
<b>LOS ANGELES FIRE STATION 53</b>	<b>438 N MESA ST</b>	<b>115-6,9</b>
<b>SUN KYUNG KIM SHELL STATION</b>	<b>406 N GAFFEY ST</b>	<b>117-5,6,8,9</b>
<b>BEACON</b>	<b>335 N GAFFEY</b>	<b>117-5,6,8,9</b>
<b>TEXACO SERVICE STATION</b>	<b>336 GAFFEY</b>	<b>117-5,6,8,9</b>
<b>LEONARD/ANGELKA BARIC/VICTOR/N</b>	<b>340 N PACIFIC AVE</b>	<b>120-6,9</b>
<b>MIKE &amp; JOE'S AUTO GARAGE</b>	<b>303 N PACIFIC AVE</b>	<b>120-9</b>
<b>LOS ANGELES MARINE HARDWARE</b>	<b>345 N BEACON ST</b>	<b>121-6,9</b>
<b>MARHOLZ CHEVRON</b>	<b>106 S GAFFEY ST</b>	<b>132-8,9</b>
<b>MARKET RECYCLING INC</b>	<b>111 S PACIFIC AVE</b>	<b>134-9</b>
<b>NEIGHBORHOOD SHELL</b>	<b>987 W 1ST ST</b>	<b>136-8</b>
<b>JO RYAN &amp; HALLDIS MOSTREM</b>	<b>987 W 1ST ST</b>	<b>136-8</b>
<b>HARBOR DISTRICT YARD</b>	<b>950 W 1ST ST</b>	<b>137-8</b>
<b>TOM ANAST</b>	<b>100 W 1ST ST</b>	<b>140-9</b>
<b>WORLD OIL CO</b>	<b>210 S GAFFEY</b>	<b>144-8,9</b>
<b>CARLOS 3RD ST GARAGE</b>	<b>302 S PACIFIC AVE</b>	<b>145-9</b>
<b>PETERSO CONSTRUCTION</b>	<b>334 S PACIFIC AVE</b>	<b>145-9</b>
<b>CITY OF LOS ANGELES</b>	<b>351 S HARBOR BLVD</b>	<b>147-9</b>
<b>HARBOR SHIP SUPPLY</b>	<b>422 W 4TH ST</b>	<b>152-9</b>
<b>SAN PEDRO HARBOR SHIP</b>	<b>401 S MESA ST</b>	<b>152-9</b>
<b>SUPREME PAINT CORPORATION</b>	<b>505 S PACIFIC AVE</b>	<b>158-9</b>
<b>TEXACO</b>	<b>500 S GAFFEY ST</b>	<b>159-8,9</b>
<b>PACIFIC BELL</b>	<b>460 W 5TH ST</b>	<b>162-9</b>
<b>PACIFIC BELL/C</b>	<b>425 W 5TH ST</b>	<b>163-9</b>
<b>BASF CORP AT REFINERS MKTG CO</b>	<b>100 S SEASIDE AVE BASF</b>	<b>164-9</b>
<b>PACIFIC PLACE ASSOCIATES INC</b>	<b>222 W 6TH ST</b>	<b>165-9</b>
<b>BEACON STREET HOTEL ASSOCIATIO</b>	<b>601 S PALOS VERDES ST</b>	<b>165-9</b>
<b>UNK</b>	<b>576 W 6TH ST</b>	<b>170-9</b>
<b>SAN PEDRO MUNICIPAL BLDG</b>	<b>638 S BEACON ST</b>	<b>177-9</b>
<b>7TH STREET GARAGE INCORPORATED</b>	<b>285 W 7TH ST</b>	<b>178-9</b>
<b>ATLANTIC RICHFIELD CO</b>	<b>1490 W 7TH ST</b>	<b>180-8</b>
<b>SAN PEDRO CAR WASH</b>	<b>735 S GAFFEY ST</b>	<b>187-8,9</b>
<b>SAN PEDRO MUNICIPAL BUILD</b>	<b>839 BEACON</b>	<b>202-9</b>
<b>YAND CHAE CHUNG</b>	<b>900 PACIFIC AVE</b>	<b>210-9</b>
<b>RAY DEETER TIRETOWN INC</b>	<b>1024 S PACIFIC AVE</b>	<b>217-9</b>
<b>RAY DEETER TIRE TOWN INC</b>	<b>1030 S PACIFIC AVE</b>	<b>217-9</b>
<b>OLLA BEVERLY</b>	<b>1001 S GAFFEY ST</b>	<b>219-8,9</b>
<b>FRANK'S AUTO SERVICE</b>	<b>1103 S MEYLER ST</b>	<b>228-8</b>
<b>DALCIN CUMMINS ASSOCIATES</b>	<b>1236 S PACIFIC AVE</b>	<b>233-9</b>
<b>PACIFIC BODY SHOP</b>	<b>1437 S PACIFIC AVE</b>	<b>244-9</b>
<b>SODERSTROM ENTERPRISES INC</b>	<b>1506 S PACIFIC AVE</b>	<b>244-9</b>



## EXECUTIVE SUMMARY

<u>Site</u>	<u>Address</u>	<u>Map ID</u>
<i>MODERN BRAKE &amp; AUTOMOTIVE</i>	<i>1530 S PACIFIC AVE</i>	<i>244-9</i>
<i>Y &amp; S AUTO BODY SHOP</i>	<i>1553 S PACIFIC AVE</i>	<i>244-9</i>
<i>INTERNATIONAL MOTORS</i>	<i>1600 S PACIFIC AVE</i>	<i>244-9</i>
<i>GOJKO SPRALJA</i>	<i>1631 S PACIFIC AVE</i>	<i>244-9</i>
<i>SANG HYUN LEE</i>	<i>1704 S PACIFIC AVE</i>	<i>244-9</i>
<i>TEXACO INC</i>	<i>1500 S GAFFEY ST</i>	<i>246-8,9</i>
<i>MOBIL SERVICE STATION 11 MTD</i>	<i>1637 S GAFFEY ST</i>	<i>253-8,9</i>
<i>LOS ANGELES FIRE STATION 48</i>	<i>1601 S GRAND AVE</i>	<i>255-9</i>
<i>BP WEST COAST PRODUCTS LLC 096</i>	<i>1706 S GAFFEY ST</i>	<i>258-8,9</i>
<i>T &amp; A GARAGE</i>	<i>1750 S PACIFIC AVE</i>	<i>262-9</i>
<i>PALOS VERDES SHORES MOBILE EST</i>	<i>2275 W 25TH ST</i>	<i>268-7</i>
<i>MORSE DRIVE PUMP STATION</i>	<i>1603 W MORSE DR</i>	<i>271-8</i>
<i>PORT OF LOS ANGELES - WAREHOUS</i>	<i>260 E. 22ND STREET</i>	<i>275-9</i>
<i>JOE &amp; MIKE GOOD AUTO</i>	<i>2010 S PACIFIC AVE</i>	<i>279-9,13</i>
<i>LITTLE SISTERS OF THE POOR</i>	<i>2100 S WESTERN AVE</i>	<i>281-8,12</i>
<i>FISH MARKET</i>	<i>402 W 21ST ST</i>	<i>284-9,13</i>
<i>STANLEY D. MEGLIO</i>	<i>403 W 21ST ST</i>	<i>284-9,13</i>
<i>UNION HARBOR STATION</i>	<i>200 W 22ND ST</i>	<i>291-13</i>
<i>UNOCAL CORP.</i>	<i>PIER 78</i>	<i>294-13</i>
<i>SOUTH SHORES CHEVRON</i>	<i>1660 W 25TH ST</i>	<i>298-12</i>
<i>GUILTY M SEIF/HAMID KHORSAN</i>	<i>1603 W 25TH ST</i>	<i>298-12</i>
<i>EXXONMOBIL OIL CORP 13106</i>	<i>2490 S WESTERN AVE</i>	<i>298-12</i>
<i>DEPARTMENT OF AIR FORCE</i>	<i>2434 S PACIFIC AVE</i>	<i>303-13</i>
<i>LOS ANGELES FIRE STATION 101</i>	<i>1414 W 25TH ST</i>	<i>309-12</i>

CHMIRS: The California Hazardous Material Incident Report System contains information on reported hazardous material incidents, i.e., accidental releases or spills. The source is the California Office of Emergency Services.

A review of the CHMIRS list, as provided by EDR, and dated 12/31/2009 has revealed that there are 46 CHMIRS sites within the searched area.

<u>Site</u>	<u>Address</u>	<u>Map ID</u>
Not reported	202 FIGUEROA ST	7-3
Not reported	2050 JOHN S. GIBSON BLV	11-3
Not reported	2050 JOHN S. GIBSON BLV	11-3
Not reported	2001 JOHN GIBSON BLVD.	12-3
Not reported	2001 WEST JOHN S. GIBSO	12-3
Date Completed: 29-OCT-90		
Not reported	INTERSECTION OF WESTERN	14-2,5
Not reported	1830 JOHN S. GIBSON BLV	24-6
Not reported	BERTH 126	27-6
Date Completed: 11-NOV-89		
Date Completed: 28-JAN-88		
Not reported	1701 NORTH GAFFEY SAN P	44-5
Not reported	1102 BLOOMWOOD RD	48-5
Not reported	1102 BLOOMWOOD ROAD	48-5
Not reported	1102 BLOOMWOOD RD.	48-5
Not reported	1363 N. GAFFEY STREET	55-5,6
Not reported	1313 NORTH GAFFEY STREE	59-5,6
Not reported	1414 BRETT PLACE	63-5
Not reported	100 SWINFORD	89-6

## EXECUTIVE SUMMARY

<u>Site</u>	<u>Address</u>	<u>Map ID</u>
Not reported	130 NORTH BANDINI STREE	129-8
Not reported	901 1/2 WEST 2ND STREET	141-8
Not reported	300 S. HARBOR BLVD, BER	147-9
Not reported	300 SOUTH HARBOR BLVD.	147-9
Not reported	444 S. HARBOR BLVD	147-9
Not reported	2108 DALADIER DRIVE	157-7
Not reported	302 WEST 5TH ST	161-9
Not reported	BERTH 233	166-9
Date Completed: 23-FEB-90		
Not reported	461 WEST 6TH STREET	172-9
Date Completed: 15-JAN-91		
Not reported	2342 DALADIER DR.	198-7
Not reported	545 W. 14TH ST.	242-9
Not reported	1637 SOUTH GAFFEY STREE	253-8,9
<b>OCEAN PARADISE CF#3780KR</b>	<b>950 SAMPSON WAY</b>	<b>254-9</b>
Not reported	1913 VALLECITO DR.	277-7
Not reported	2500 MINOR STREET	287-9,13
Not reported	1660 W. 25TH ST.	298-12
Not reported	241 WATCHHORN WALK, SLI	312-13
Not reported	241 WATCHORN WALK, BIRT	312-13
Not reported	514 WEST 26TH STREET	316-13
Not reported	2700 WALKER AVE.	317-12
Not reported	2800 MINOR ST., SLIP EC	318-13
<b>SUBOFICIAL CASTILLO</b>	<b>BERTH 57</b>	<b>318-13</b>
Not reported	210 WHALER'S WALK, BERT	323-13
<b>Not reported</b>	<b>210 WHALERS WALK</b>	<b>323-13</b>
Not reported	224 WHALERS WALK, BERTH	323-13
Not reported	224 WHALERS WALK	323-13
Not reported	224 WHALER'S WALK	323-13
Not reported	2800 VIA CABRILLO MARIN	326-13
Not reported	2800 VIA CABRILLO MARIN	326-13
Not reported	2800 VIA CABRILLO MARIN	326-13

Notify 65: Notify 65 records contain facility notifications about any release that could impact drinking water and thereby expose the public to a potential health risk. The data come from the State Water Resources Control Board's Proposition 65 database.

A review of the Notify 65 list, as provided by EDR, and dated 10/21/1993 has revealed that there is 1 Notify 65 site within the searched area.

<u>Site</u>	<u>Address</u>	<u>Map ID</u>
<b>TODD PACIFIC SHIPYARDS CORPORA</b>	<b>710 N FRONT ST</b>	<b>90-6</b>

## EXECUTIVE SUMMARY

DEED: The use of recorded land use restrictions is one of the methods the DTSC uses to protect the public from unsafe exposures to hazardous substances and wastes .

A review of the DEED list, as provided by EDR, and dated 12/14/2010 has revealed that there are 2 DEED sites within the searched area.

<u>Site</u>	<u>Address</u>	<u>Map ID</u>
<b>GATX ANNEX TERMINAL-SAN PEDRO</b>	<b>208 EAST 22ND STREET</b>	<b>276-9</b>
<b>LUCKY DRY CLEANERS</b>	<b>1609 W 25TH ST</b>	<b>298-12</b>

VCP: Contains low threat level properties with either confirmed or unconfirmed releases and the project proponents have request that DTSC oversee investigation and/or cleanup activities and have agreed to provide coverage for DTSC's costs.

A review of the VCP list, as provided by EDR, and dated 11/08/2010 has revealed that there are 4 VCP sites within the searched area.

<u>Site</u>	<u>Address</u>	<u>Map ID</u>
<b>KINDER MORGAN - GAFFEY STREET</b>	<b>1313/1363 N GAFFEY STRE</b>	<b>59-5,6</b>
<b>EDISON/SAN PEDRO MGP</b>	<b>SANTA CRUZ ST. CENTREST</b>	<b>128-9</b>
<b>LUCKY DRY CLEANERS</b>	<b>1609 W 25TH ST</b>	<b>298-12</b>
<b>SAN PEDRO BOAT WORKS</b>	<b>BERTH 44 OUTER HARBOR</b>	<b>314-13</b>

DRYCLEANERS: A list of drycleaner related facilities that have EPA ID numbers. These are facilities with certain SIC codes: power laundries, family and commercial; garment pressing and cleaners' agents; linen supply; coin-operated laundries and cleaning; drycleaning plants except rugs; carpet and upholstery cleaning; industrial launderers; laundry and garment services.

A review of the DRYCLEANERS list, as provided by EDR, and dated 09/15/2010 has revealed that there are 28 DRYCLEANERS sites within the searched area.

<u>Site</u>	<u>Address</u>	<u>Map ID</u>
<b>GARDEN VILLAGE CLEANERS</b>	<b>28134 S WESTERN AVE</b>	<b>28-5</b>
<b>GARDEN VILLAGE CLEANERS</b>	<b>28144 S WESTERN AVE</b>	<b>28-5</b>
<b>RANCHO CLEANERS</b>	<b>28374 S WESTERN AVE</b>	<b>33-5</b>
<b>RANCHO CLEANERS</b>	<b>28374 S. WESTERN AVE.</b>	<b>33-5</b>
<b>DONAHUE SHRIVER REALTY GROUP</b>	<b>28374 S WESTERN AVE</b>	<b>33-5</b>
<b>GOYA CLEANERS</b>	<b>28625 S WESTERN AVE</b>	<b>46-5</b>
<b>ACE CLEANERS</b>	<b>29050 S WESTERN AVE</b>	<b>64-5</b>
<b>HILL SIDE CLEANERS</b>	<b>29117 S WESTERN AVE</b>	<b>64-5</b>
<b>HILLSIDE CLEANERS</b>	<b>29117 SOUTH WESTERN</b>	<b>64-5</b>
<b>HILLSIDE CLEANERS</b>	<b>29117 S WESTERN AVE</b>	<b>64-5</b>
<b>MASTER CLEANERS</b>	<b>1076 N WESTERN AVE</b>	<b>64-5</b>
<b>BON-TON CLEANERS</b>	<b>28941 S WESTERN AVE</b>	<b>64-5</b>
<b>CHANNEL CLEANERS</b>	<b>639 CHANNEL ST</b>	<b>70-5,6</b>
<b>MASTER CLEANERS</b>	<b>1018 N WESTERN AVE</b>	<b>79-5</b>
<b>MICHAEL'S PARK PLAZA CLEANERS</b>	<b>804 N WESTERN AVE</b>	<b>92-5</b>
<b>WESTERN CLEANERS</b>	<b>29505 WESTERN AVE UNIT</b>	<b>92-5</b>
<b>RANCHO CLEANERS</b>	<b>28374 S WESTERN</b>	<b>93-5</b>
<b>COAST DIVING SERVICES INC</b>	<b>305 N BEACON ST</b>	<b>121-9</b>
<b>OCEAN PARK CLEANERS</b>	<b>114 N GAFFEY ST UNIT C</b>	<b>132-8,9</b>
<b>RICHARD'S CLEANERS</b>	<b>538 W 5TH ST</b>	<b>158-9</b>

## EXECUTIVE SUMMARY

<u>Site</u>	<u>Address</u>	<u>Map ID</u>
<b>REGAL CLEANERS</b>	<b>519 S GAFFEY ST</b>	<b>159-8,9</b>
<b>SOUTH BAY BODY SHOP</b>	<b>546 W 6TH ST</b>	<b>171-9</b>
<b>GAFFEY CLEANERS</b>	<b>801 S GAFFEY ST</b>	<b>187-8,9</b>
<b>MAREENA CLEANERS</b>	<b>801 S GAFFEY ST</b>	<b>187-8,9</b>
<b>SAN PEDRO CLEANERS</b>	<b>1603 S GAFFEY ST</b>	<b>253-8,9</b>
<b>MARTY'S VILLAGE CLEANERS</b>	<b>2302 S WESTERN AVE</b>	<b>295-12</b>
<b>LUCKY CLEANERS</b>	<b>1609 W 25TH STREET</b>	<b>298-12</b>
<b>PACIFIC VIEW DRY CLEANERS</b>	<b>1438 W 25TH ST</b>	<b>307-12</b>

CDL: A listing of drug lab locations. Listing of a location in this database does not indicate that any illegal drug lab materials were or were not present there, and does not constitute a determination that the location either requires or does not require additional cleanup work.

A review of the CDL list, as provided by EDR, and dated 08/19/2010 has revealed that there are 9 CDL sites within the searched area.

<u>Site</u>	<u>Address</u>	<u>Map ID</u>
Not reported	851 N PACIFIC	80-6
Not reported	130 NORTH MEYLER STREET	130-8
Not reported	975 W 5TH ST	156-8
Not reported	829 W 5TH	160-8
Not reported	1004 W 9TH ST	205-8
Not reported	256 WEST 11TH STREET	227-9
Not reported	1216 W 24TH ST	304-12
Not reported	2900 SHOSHONEAN RD	324-13
Not reported	3705 S LELAND ST	340-12

RESPONSE: Identifies confirmed release sites where DTSC is involved in remediation, either in a lead or oversight capacity. These confirmed release sites are generally high-priority and high potential risk.

A review of the RESPONSE list, as provided by EDR, and dated 11/08/2010 has revealed that there are 3 RESPONSE sites within the searched area.

<u>Site</u>	<u>Address</u>	<u>Map ID</u>
<b>RICHARDS CLEANERS</b>	<b>538 WEST 5TH STREET</b>	<b>158-9</b>
<b>GATX ANNEX TERMINAL-SAN PEDRO</b>	<b>208 EAST 22ND STREET</b>	<b>276-9</b>
<b>FORT MACARTHUR LOWER &amp; MIDDLE</b>	<b>2901 ARTHUR MACARTHUR R</b>	<b>322-13</b>

HAZNET: The data is extracted from the copies of hazardous waste manifests received each year by the DTSC. The annual volume of manifests is typically 700,000-1,000,000 annually, representing approximately 350,000-500,000 shipments. Data from non-California manifests & continuation sheets are not included at the present time. Data are from the manifests submitted without correction, and therefore many contain some invalid values for data elements such as generator ID, TSD ID, waste category, & disposal method. The source is the Department of Toxic Substance Control is the agency

A review of the HAZNET list, as provided by EDR, and dated 12/31/2009 has revealed that there are 462

## EXECUTIVE SUMMARY

HAZNET sites within the searched area.

Site	Address	Map ID
R F KENNEDY HEAD START	334 FIGUEROA ST	1-3
HARBOR RADIATOR	328 N FIGUEROA	1-3
ROCKET OIL, INC #5	302 N FIGUEROA ST	1-3
<b>TRANSIT CONTRACTS</b>	<b>221 MAR VISTA</b>	<b>2-3</b>
PAUL J. DUFFY	221 NORTH MAR VISTA AVE	2-3
CUNICO CORP	214 N HAWAIIAN	3-3
HARBOR TRUCK WASH	240 FIGUEROA	4-3
GREEN HILL MEMORIAL PARK INC	27501 SOUTH WESTERN AVE	5-2
<b>GREEN HILLS MEMORIAL PARK</b>	<b>27501 WESTERN AVE S</b>	<b>5-2</b>
1X GREENHILLS MEM PK	27501 SO WESTERN AVE{	5-2
CITY OF LOS ANGELES	2175 JOHN S GIBSTON BLV	10-3
K & R TRANSPORTATION	2050 JOHN GIBSON BLVD	11-3
UNITED ALLOYS & METALS	2050 JOHN GIBSON BLVD	11-3
<b>AMERICAN PRESIDENT LINES, LTD.</b>	<b>2050 JOHN S GIBSON BLVD</b>	<b>11-3</b>
SULLY MILLER CONTRACTIV CO INC	2001 JOHN S GIBSON BLVD	12-3
EAGLE MARINE SERVICES LTD	2001 JOHN GIBSON BLVD	12-3
THE ARCHDIOCESE OF LOS ANGELES	2300-2345 TAPER AVE	15-2,5
GAUDENTI & SONS CORPORATION	2215 N GAFFEY	16-2,5
<b>GAUDENTI CORP</b>	<b>2215 N GAFFEY ST</b>	<b>16-2,5</b>
PORT LA DISTRIBUTION CENTER II	300-350 WESTMONT DR	17-3,6
NIPPON EXPRESS USA INC	300 WESTMONT DR	17-3,6
<b>LAUSD COOPER HS</b>	<b>2210 TAPER AVE</b>	<b>20-5</b>
<b>THE HOME DEPOT NO 1005</b>	<b>2115 N GAFFEY ST</b>	<b>22-5</b>
SLABY TRUST	2115 NORTH GAFFEY ST	22-5
<b>GAFFEY STREET VENTURES</b>	<b>2100 N GAFFEY ST</b>	<b>22-5</b>
<b>WESTERN FUEL OIL CO</b>	<b>2100 N GAFFEY</b>	<b>22-5</b>
GAFFEY STREET VENTURE LLC	2100 N GAFFEY ST	22-5
LAUSD/SAN PEDRO SCIENCE CTR	2201 BARRYWOOD AVENUE	23-5
MARINE TERMINALS CORPORATION	1830 JOHN GIBSON BLVD	24-6
BAUNE CHIROPRACTIC OFFICE	28068 S WESTERN AVE	25-5
ALBERTSON'S #6164	28090 SOUTH WESTERN AVE	25-5
LAUSD/ DODSON JH	28014 MONTEREINA DR	26-4,5
<b>GARDEN VILLAGE CLEANERS</b>	<b>28134 S WESTERN AVE</b>	<b>28-5</b>
<b>GARDEN VILLAGE CLEANERS</b>	<b>28144 S WESTERN AVE</b>	<b>28-5</b>
HUUKA AMERICA CORP.	2000 NORTH GAFFEY	29-5
MINI-PAC	1951 N GAFFEY ST	32-5
WELLS FARGO BANK	28350 SO WESTERN AVE	33-5
JOSEPH W CHANG DDS INC	28358 S WESTERN AVE	33-5
<b>DONAHUE SHRIVER REALTY GROUP</b>	<b>28374 S WESTERN AVE</b>	<b>33-5</b>
STEVE WISNIEWSKI	2121 VELEZ DR	34-4,5
Z CUBE	1851 N GAFFEY ST, #C	35-5
CREATIVE TEXTILES INC	1861 N GAFFEY ST SUITE	35-5
<b>LAUSD/ TAPER AVE ELEM</b>	<b>1824 TAPER AVE</b>	<b>36-5</b>
KAREN & HUBERT JACOBSON	1466 STONEWOOD COURT	39-5
LYNNE FAVAZZA	1464 STONEWOOD CT	39-5
TOM BABIAR	1828 AMELIA AVE	40-5
<b>RUEBENS RESTARAUNT</b>	<b>28500 S WESTERN AVE</b>	<b>41-5</b>
<b>TARGET CORP</b>	<b>1701 N GAFFEY ST</b>	<b>43-5,6</b>
INTERSTATE BRANDS CORP	1701 NO. GAFFEY	43-5,6
<b>SOUTHERN CALIFORNIA GAS C</b>	<b>755 CAPITOL</b>	<b>45-5</b>
<b>SO CALIFORNIA GAS COMPANY</b>	<b>755 W CAPITOL DR</b>	<b>45-5</b>
<b>GOYA CLEANERS</b>	<b>28625 S WESTERN AVE</b>	<b>46-5</b>
DR CHEN'S OFFICE	28633 S WESTERN AVE STE	46-5
TRESIERRAS CONSTRUCTION	28667 VISTA MADERA	47-5
Y&S AUTO BODY SHOP	1441 N GAFFEY ST	51-5,6

## EXECUTIVE SUMMARY

Site	Address	Map ID
Y & S AUTO BODY SHOP	1441 N GAFFEY ST	51-5,6
GATX TERMINALS CORPORATION	BERTH 70-71 SIGNAL STRE	52-6
CHEVRON USA	28798 WESTERN AVENUE	53-5
CITY OF LOS ANGELES - DPW - BU	1400 N GAFFEY ST	55-5,6
<b>CITY OF LA GENERAL SERVICES</b>	<b>1400 N GAFFEY ST</b>	<b>55-5,6</b>
<b>KINDER MORGAN ENERGY PARTNERS</b>	<b>1363 N GAFFEY ST</b>	<b>55-5,6</b>
<b>LA HARBOR</b>	<b>1400 N GAFFEY ST</b>	<b>55-5,6</b>
HARBOR WALK HOA	1441 BRETT PL	56-5
HARBOR WALK HOMEOWNERS ASSOCIA	1441 BRETT PL	56-5
AMDAN INVESTMENTS LLC	28924 S WESTERN AVE	57-5
<b>ADVANCE GERMAN CAR</b>	<b>1303 N GAFFEY ST</b>	<b>59-5,6</b>
CYCLE SERVICE RACING	1244 N GAFFEY AVE	59-5,6
SAN PEDRO TOYOTA REPAIR	1208 C NORTH GAFFEY STR	59-5,6
SAN PEDRO AUTO SPECIALIST	1206-B N GAFFEY ST	59-5,6
MELNEKE DISCOUNT MUFFLERS	1204 NO GAFFEY ST	59-5,6
MICHAELIS & SONS MOTORS	1204 N GAFFEY ST UNIT A	59-5,6
OH'S CHEVRON SERVICE	711 BATTERY ST	59-5,6
JERRY YOUNGS RADIATOR	637 BATTERY ST	59-5,6
F AND J AUTOMOTIVE	637 BATTERY STREET	59-5,6
<b>BAY AREA AUTO</b>	<b>751 BATTERY ST</b>	<b>59-5</b>
UNIVERSAL CONCRETE CUTTING	725 W BATTERY ST	59-5,6
DATONA TIRE CENTERS	1204 A N GAFFIE	59-5,6
<b>KRUPP MAK</b>	<b>729 BASIN ST</b>	<b>60-5</b>
PIERSON PROPERTIES	790 W BASIN ST	61-5
COLUMBIA INSPECTION INC	790 BASIN ST #2	61-5
FIDELITY FEDERAL BANK	29000 SO WESTERN AVENUE	64-5
FESTIVAL PROPERTIES	28901 S WESTERN AVE	64-5
TERRANCES PARTNERS LTD PARTNER	28901 WESTERN AVE	64-5
TALBERT SAN PEDRO MEDICAL	29050 S WESTERN AVE #10	64-5
<b>ACE CLEANERS</b>	<b>29050 S WESTERN AVE</b>	<b>64-5</b>
AMERICAN PHOTO	29107 SOUTH WESTERN AVE	64-5
<b>HILL SIDE CLEANERS</b>	<b>29117 S WESTERN AVE</b>	<b>64-5</b>
<b>HILLSIDE CLEANERS</b>	<b>29117 S WESTERN AVE</b>	<b>64-5</b>
HILLSIDE CLEANERS	29117 S WESTERN	64-5
<b>MASTER CLEANERS</b>	<b>1076 N WESTERN AVE</b>	<b>64-5</b>
ALL PETS VETERINARY HOSPITAL	29131 S WESTERN AVE	64-5
<b>BON-TON CLEANERS</b>	<b>28941 S WESTERN AVE</b>	<b>64-5</b>
JERRY DRENCKHAHN	2081 DORADO DR	65-5
BOZULICH & MCLEAN PAINTING CON	788 BATTERY ST.	66-5
S P A B INC DBA SAN PEDRO AUTO	789 W BATTERY ST	66-5
<b>S P A B INC DBA SAN PEDRO AUTO</b>	<b>789 BATTERY ST</b>	<b>66-5</b>
TUNEUP MASTERS_#23	1050 N PACIFIC AVE	67-6
PRUDENTIAL CALIFORNIA REALTY	2016 CADDINGTON	69-4,5
CHEVRON 99747	1105 N GAFFEY ST/CHANNE	70-5,6
<b>99747</b>	<b>1105 N GAFFEY ST</b>	<b>70-5,6</b>
SEAPORT PLAZA	1110 N GAFFEY ST	70-5,6
<b>BP WEST COAST PRODUCTS LLC 030</b>	<b>701 W CHANNEL ST</b>	<b>70-5,6</b>
LEE'S ARCO AM/PM MINI MARKET	701 W CHANNEL ST	70-5,6
ARCO PRODUCTS COMPANY	701 W CHANNEL ST	70-5,6
<b>CHANNEL CLEANERS</b>	<b>639 CHANNEL ST</b>	<b>70-5,6</b>
COLUMBIA INSPECTION INC	797 W CHANNEL ST	71-5
HARBOR BODY SHOP	736 W CHANNEL ST	72-5
BUTCH'S AUTO CENTER	736 CHANNEL STREET	72-5
JOSEPH & PAMELA BAKER	1968 HOMEWORTH DR	73-5
BILL CRAWFORD	1327 PARK WESTERN DR	74-5
PARTY TIME ICE INC	983 N PACIFIC AVE	76-6

## EXECUTIVE SUMMARY

Site	Address	Map ID
DIAMOND TANK LINES	1010 N GAFFEY ST	77-5
<b>COLGRO PLATING</b>	<b>1006 N GAFFEY ST</b>	<b>77-5</b>
SOUTHWEST COATINGS	760 MIRAFLORES	77-5
<b>WEST COAST AEROSPACE INC</b>	<b>812 MIRAFLORES ST</b>	<b>77-5</b>
Y & S ENTERPRISES	808 MIRAFLORES	77-5
LAUSD/ PARK WESTERN PL ELEM	1214 PARK WESTERN PLACE	78-5
<b>MASTER CLEANERS</b>	<b>1018 N WESTERN AVE</b>	<b>79-5</b>
SPEEDY PHOTO	1014 N WESTERN AVE	79-5
KRAGEN #1649	29227 S WESTERN AVE	79-5
SAN PEDRO BEACH PROPERTIES	29227 S WESTERN AVE	79-5
<b>PARK PLAZA SHELL</b>	<b>990 N WESTERN AVE</b>	<b>79-5</b>
SAV ON 9571	950 N WESTERN AVE	79-5
SAV ON 9571	950 N WESTERN	79-5
CVS PHARMACY # 9571	950 N WESTERN AVE	79-5
WESTERN AVE.DENTAL CTR.	946 N. WESTERN AVE.	79-5
GREAT LAKES DREDGE & DOCK CO.	FRONT & KNOLL	82-6
MIRA LESTE ELEMENTARY SCH	6245 VIA CANADA	83-4
COASTAL PHYSICIAN MEDICAL GROU	29409 S WESTERN AVENUE	84-5
<b>IMMEDIATE MEDICAL CARE CENTER</b>	<b>29409 S WESTERN AVE</b>	<b>84-5</b>
EQUILON ENTERPRISES LLC	900 N WESTERN	84-5
LOS ANGELES FIRE & POLICE PENS	900 N WESTERN AVE	84-5
<b>EQUILON ENTERPRISES</b>	<b>900 N WESTERN</b>	<b>84-5</b>
<b>98987</b>	<b>29421 S WESTERN AVE</b>	<b>84-5</b>
<b>CHEVRON STATION 9 8987</b>	<b>29421 S WESTERN AVE</b>	<b>84-5</b>
PR MICHAELLS CHEVRON SVC	29421 WESTERN	84-5
<b>LAUSD/HARBOR OCCUPATIONAL CENT</b>	<b>740 N PACIFIC AVE</b>	<b>86-6</b>
<b>HARBOR OCCUPATIONAL/CENTER</b>	<b>740 N PACIFIC AVE</b>	<b>86-6</b>
<b>TODD SHIPYARD</b>	<b>710 FRONT</b>	<b>90-6</b>
LELAND RECREATION CTR	863 S HERBERT ST	91-5
BANK OF AMERICA	800 N WESTERN AVE	92-5
<b>WESTERN CLEANERS</b>	<b>29505 WESTERN AVE UNIT</b>	<b>92-5</b>
RFG OIL INC DBA VALVOLINE INST	29519 WESTERN AVENUE	92-5
GOODYEAR AUTO SERVICE CENTER	29529 S WESTERN AVENUE	92-5
<b>RANCHO CLEANERS</b>	<b>28374 S WESTERN</b>	<b>93-5</b>
LAUSD/ CRESTWOOD ST ELEM	1946 W CRESTWOOD ST	94-5
STEPHEN & KATHLEEN DORAN	4053 MIRA LESTE	96-4
LOS ANGELES COUNTY FIRE DEPT	83 MIRALESTE PLAZA	98-4
<b>CHEVRON STATION #9-8649</b>	<b>40 MIRALESTE PLAZA</b>	<b>98-4</b>
<b>CHEVRON STATION NO 98649</b>	<b>40 MIRALESTE PLAZA</b>	<b>98-4</b>
CHEVRON 98649	40 MIRALESTE PLAZA	98-4
CITY OF LA/RECR & PARK/PECK PA	560 N WESTERN AVENUE	100-5
CITY OF LA, PECK PARK	560 N WESTERN AVE	100-5
<b>PECK PARK REC CENTER</b>	<b>560 N WESTERN AVE</b>	<b>100-5</b>
DISCOUNT TIRE CTRS #149	29701 S WESTERN AVE UNI	103-5
<b>UNOCAL #5092</b>	<b>29701 WESTERN AVE S</b>	<b>103-5</b>
C-WORTHY INDUSTRIAL PAINT	508 NO BEACON ST	105-6
COUNTY OF LOS ANGELES ISD	505 S CENTER ST	106-6
<b>PLAZA AUTOMOTIVE CENTER</b>	<b>505 N PACIFIC AVE</b>	<b>107-6</b>
PARCE INC DBA PLAZA TOWING	505 N PACIFIC AVE	107-6
CHRIS'S TREE SERVICE	502 N PACIFIC AVE	107-6
JOHN FENTIS	502 N PACIFIC AVE	107-6
FENTIS FAMILY TRUST	503 HARKER ST	108-6
JOSEPH GIDDINGS, MICHELE BARCO	506 NO. PALOS VERDES	109-6
MARTIN QUINTANA	544 W OLIVER ST	110-6
<b>SAN PEDRO SIGNAL</b>	<b>501 N MESA ST</b>	<b>111-6</b>
LAUSD/ BANDINI ELEM	425 N BANDINI ST	112-5

## EXECUTIVE SUMMARY

Site	Address	Map ID
LAUSD/ BARTON HILL ELEM	423 N PACIFIC AVE	114-6,9
<b>LOS ANGELES FIRE STATION 53</b>	<b>438 N MESA ST</b>	<b>115-6,9</b>
RENES GARAGE	433 MESA	115-6,9
KAISER INTERNATIONAL	411 N HARBOR BLVD	116-6,9
SHELL	406 N GAFFEY	117-5,6,8,9
<b>BEACON</b>	<b>335 N GAFFEY</b>	<b>117-5,6,8,9</b>
BRANISLAV MADZAREVIC, DDS	312 N GAFFEY ST, STE 20	117-5,6,8,9
JOHN'S REPAIR & BODY SHOP	340 N PACIFIC	120-6,9
JOHN'S BODY SHOP	340 N PACIFIC AVE	120-6,9
JOHN'S AUTO REPAIR SHOP	340 NORTH PACIFIC AVE	120-6,9
STEPHEN CASTELAN	303 NO PACIFIC AVENUE	120-9
MARINA HARDWARE COMPANY, INC.	345 NORTH BEACON	121-6,9
<b>COAST DIVING SERVICES INC</b>	<b>305 N BEACON ST</b>	<b>121-9</b>
<b>ARGO BATTERY</b>	<b>327 N HARBOR BLVD</b>	<b>123-6,9</b>
SAN PEDRO FAMILY DENTAL CENTER	204 N PACIFIC AVE	125-9
WILLIAM SHIER	639 WEST SANTA CRUZ DR	127-9
CHEVRON PRODUCTS CO	111 NORTH HARBOR BOULEV	131-9
PHOTO ONE	134 N GAFFY ST SUITE G	132-8,9
<b>OCEAN PARK CLEANERS</b>	<b>114 N GAFFEY ST UNIT C</b>	<b>132-8,9</b>
<b>CHEVRON STATION NO 98701</b>	<b>106 S GAFFEY ST</b>	<b>132-8,9</b>
CHEVRON 98701	106 SOUTH GAFFEY ST	132-8,9
MARKS AUTO	130 N PACIFIC	134-9
RAPID TRANSIT	114 N PACIFIC AV	134-9
RANCHO SAN PEDRO	275 W 1ST ST	135-9
CITY OF LA/HOUSING AUTHORITY	275 W FIRST ST	135-9
RUSSELL CALKINS	986 FIRST ST	136-8
<b>NEIGHBORHOOD SHELL</b>	<b>987 W 1ST ST</b>	<b>136-8</b>
<b>SHELL SERVICE STATION</b>	<b>987 W 1ST</b>	<b>136-8</b>
SHELL	987 W 1ST	136-8
<b>LA DEPARTMENT WATER &amp; POWER</b>	<b>950 W 1ST ST</b>	<b>137-8</b>
LA DEPARTMENT WATER & POWER	950 W 1ST ST	137-8
DEPT OF WATER & POWER	950 W 1ST ST	137-8
AMERICAN RED CROSS	1499 WEST 1ST STREET	138-8
INSTANT PRINT KING	537 W 2ND ST	142-9
TRANSAMERICAN FINANCIAL SERVIC	481 WEST 2ND ST	143-9
APRO #11	210 S GAFFEY	144-8,9
<b>WORLD OIL CO</b>	<b>210 S GAFFEY</b>	<b>144-8,9</b>
HARBOR BRAKE SERVICE INC	217 S PACIFIC AVE	145-9
<b>CARLOS 3RD ST GARAGE</b>	<b>302 S PACIFIC AVE</b>	<b>145-9</b>
BP WEST COAST PRODUCTS LLC 096	302 S PACIFIC	145-9
BP WEST COAST PRODUCTS LLC #96	302 S PACIFIC AVE	145-9
PALADIN PROPERTIES LLC	321 S PACIFIC AVE	145-9
SOUTHERN PACIFIC BANK	334 S PACIFIC BLVD	145-9
VERDES DEL ORIENTE	360 W 3RD ST	146-9
<b>CROWLEY MARINE SERVICES INC</b>	<b>BERTH 86</b>	<b>147-9</b>
CITY OF LA GENERAL SERVICES	444 S HARBOR BLVD	147-9
LAUSD/WILLENBERG SPEC ED	308 WEYMOUTH AV	148-8
AMERICAN TEC INC	301 SOUTH BANDINI ST	150-8
DR HAMID COHEN DDS	400 S GAFFEY	151-8,9
SAN PADRO HARBOR SHIP SUPPLY	401 S MESA	152-9
ABELS GARAGE	433 S MESA	152-9
HARBOR TIRE INC	425 SOUTH PACIFIC AVE	153-9
SCHER TIRE #23	425 S PACIFIC	153-9
GOODYEAR SOUTH CITIES TIRE	425 S PACIFIC	153-9
RUSSELL SAMMONS	425 S PACIFIC AVE	153-9
MARCO JUAREZ DBA ABE & SONS WO	440 S PACIFIC AVE	153-9



## EXECUTIVE SUMMARY

Site	Address	Map ID
255 LANDING DBA CARLYLE/GALAXY	255 W 5TH ST	155-9
GALAXY COMMERCIAL HOLDING- THE	255 W 5TH ST	155-9
<b>BAYVIEW CLUB LLC</b>	<b>255 W 5TH ST</b>	<b>155-9</b>
EVERGREEN AMERICA CORPORATION	250 WEST 5TH ST	155-9
<b>PORT OF LOS ANGELES BERTH 174</b>	<b>425 SOUTH PALOS VERDES</b>	<b>155-9</b>
<b>HARBOR ADMINISTRATION BUILDING</b>	<b>425 S PALOS VERDES ST</b>	<b>155-9</b>
<b>RICHARD'S CLEANERS</b>	<b>538 W 5TH ST</b>	<b>158-9</b>
RAINBOW SERVICES LTD	521-533 5TH ST	158-9
AUTOZONE #5480	535 PACIFIC AVE S	158-9
THE PEP BOYS MANNY MOE & JACK	535 S PACIFIC AVE	158-9
RITE AID #5513	501 S GAFFEY ST	159-8,9
THRIFTY DRUG-ONE HOUR PHOTO #6	501 SO GAFFEY ST	159-8,9
KAR KARE COMPLETE AUTO REPAIR	500 S GAFFEY	159-8,9
<b>REGAL CLEANERS</b>	<b>519 S GAFFEY ST</b>	<b>159-8,9</b>
BP OIL SHIPPING COMPANY USA	302 W 5TH ST SUITE 203	161-9
PETE'S SERVICE CENTER	476 5TH ST	162-9
<b>PACIFIC BELL</b>	<b>460 W 5TH ST</b>	<b>162-9</b>
<b>KWIK KOPY PRINTING 344</b>	<b>350 W 5TH ST SUITE 103</b>	<b>163-9</b>
ADVANCE GERMAN CAR SPEC	408 W 5TH ST	163-9
PACIFIC BELL TELEPHONE CO DBA	425 W 5TH ST	163-9
<b>PACIFIC BELL</b>	<b>425 W 5TH ST</b>	<b>163-9</b>
<b>BASF CORP AT REFINERS MKTG CO</b>	<b>100 S SEASIDE AVE BASF</b>	<b>164-9</b>
C-WORTHY INDUSTRIAL PAINT	550 S PALOS VERDES ST	165-9
CHRISTOPHER J DELEDONNE DDS	1360 W 6TH ST STE 110	167-8
<b>BIODIAGNOSTICS LABORATORY</b>	<b>1360 W 6TH ST</b>	<b>167-8</b>
CORHEALTHCARE	1360 W 6TH ST #200	167-8
SAEED MALEKAFZALI MD	1360 W 6TH ST #A	167-8
VINCENT M MARDESICH DDS AKA MA	1360 W 6TH ST STE 210	167-8
NICHOLAS S JAKSIC, DDS	1360 WEST 6TH ST, STE 2	167-8
SK WIRTSCHAFTER MD	1360 W 6TH ST STE 315 N	167-8
PETER D SLISKOVIICH MD INC	1360 W 6TH ST	167-8
DR BRUCE LEVINE, DPM	1360 W 6TH ST STE 150 W	167-8
HARBOR FAMILY MEDICAL GROUP	1360 W 6TH ST #265 W BL	167-8
ZELJKO ZIC MD	1294 WEST 6TH STREET ST	168-8
SAN PEDRO IMAGING MEDICAL GRP	1294 W 6TH STREET #103	168-8
<b>WALTERS VW REPAIR</b>	<b>678 W 6TH ST</b>	<b>169-8,9</b>
GUILLERMO J RUBIANO	670 W 6TH STREET	169-8,9
HOWARD'S AUTO REPAIR	664 W 6TH STREET	169-8,9
CITY OF LOS ANGELES	640 WEST 6TH ST	169-9
C AND R INVESTMENT SVC	626 WEST 6TH ST,UNIT 21	169-9
HENRY HALVERSON	576 WEST 6TH STREET	170-9
MILENA TASIC DDS	601 W 6TH ST	170-9
MILENA TASIC DDS	601 W 6TH ST	170-9
HARBOR COMMUNITY CLINIC	593 W 6TH ST	170-9
<b>SOUTH BAY BODY SHOP</b>	<b>546 W 6TH ST</b>	<b>171-9</b>
CITY OF LOS ANGELES/ENV COMPLI	478 W 6TH ST	172-9
INSTANT PRINT KING	454 WEST 6TH STREET	172-9
TW PROPERTIES	600 S PACIFIC AVE	172-9
<b>LA SAN PEDRO MUNICIPAL BLDG</b>	<b>638 S BEACON ST</b>	<b>177-9</b>
<b>SEVENTH STREET GARAGE</b>	<b>285 007TH</b>	<b>178-9</b>
MJM GRAPHICS	311 W 7TH ST	178-9
ARCO SMOG PROS #5162	1490 7TH ST	180-8
ARCO PRODUCTS COMPANY	1490 7TH ST	180-8
LUCY T WHITE DDS	1412 W 7TH ST	181-8
CE LA LUNA SALON	1411 W 7TH ST	181-8
JERRINE S SUMMER DDS	1411 W 7TH ST STE C	181-8

## EXECUTIVE SUMMARY

<u>Site</u>	<u>Address</u>	<u>Map ID</u>
STEPHEN TAUS, M.D.	1366 7TH ST.	182-8
ROBERT F AUTORE DMD	1350 W 7TH STREET	183-8
GEOFFREY A GROAT DDS INC	1350 W 7TH ST	183-8
LAUSD/ SEVENTH ST ELEM	1570 W 7TH ST	184-8
<b>SAN PEDRO PENINSULA HOSPITAL</b>	<b>1300 W 7TH ST</b>	<b>185-8</b>
LITTLE COMPANY OF MARY HEALTH	1300 W. 7TH ST.	185-8
CINDY PITTAYAPON DDS/BRIGHT NO	697 S GAFFEY ST	187-8,9
CVS PHARMACY # 9122	700 S GAFFEY ST	187-8,9
SAV ON #9122	700 S GAFFEY ST	187-8,9
<b>SAN PEDRO CAR WASH</b>	<b>735 S GAFFEY ST</b>	<b>187-8,9</b>
8TH & GAFFEY EAST LLC	740 S GAFFEY ST	187-8,9
<b>GAFFEY CLEANERS</b>	<b>801 S GAFFEY ST</b>	<b>187-8,9</b>
<b>MAREENA CLEANERS</b>	<b>801 S GAFFEY ST</b>	<b>187-8,9</b>
SAN PEDRO QUICK LUBE	670 7TH ST	188-8,9
8TH & GAFFEY EAST LLC	675 7TH ST	188-8,9
MARY STAR OF THE SEA CHURCH	853 WEST 7TH ST	189-8
SAN PEDRO DENTAL CARE	520 7TH ST	190-9
INSTANT PRINT KING	537 W 7TH ST	190-9
HARBOR GRAPHICS INC	470 WEST 7TH STREET	191-9
NEWS-PILOT	362 W 7TH ST	192-9
LAUSD/ CABRILLO AVE ELEM	732 S CABRILLO AVE	195-8
PROCTOR & GAMBLE PROFESSIONAL	1438 8TH ST	197-8
FRANCES JOHNSON DENTAL CENTER	1441 W 8TH ST	197-8
RB ONE HOUR PHOTO	816 SO PACIFIC AVE	200-9
WINSTON TIRE COMPANY #14	837 S PACIFIC	200-9
WINSTON TIRE CO #14	837 S PACIFIC	200-9
KRAGEN AUTO PARTS STORE #1514	842 PACIFIC AVE	200-9
ANDERSON SENIOR CENTER	828 S MESA ST	201-9
<b>SAN PEDRO MUNICIPAL BUILD</b>	<b>839 BEACON</b>	<b>202-9</b>
USPS/SAN PEDRO MAIN	839 S BEACON ST	202-9
SAINT PETERS EPISCOPAL CHURCH	1648 W 9TH ST	203-8
THE HARBOR 1, PALOS VERDES, SA	1635 WEST 9TH ST	203-8
MARC IMAI DDS	844 W 9TH ST	204-8
MARIA ELENA NEWCOMER DDS	847 W 9TH ST	204-8
ANDRES JIMENEZ MD JAMES SCHMID	670 W 9TH ST	206-8,9
THE SMOG SHOP	420 W 9TH ST	208-9
JOHN M. TOMICH DDS	783 9TH ST	209-8
UNOCAL SERVICE STATION #2575	900 S PACIFIC AVE	210-9
TOM MCCAIN DDS INC	737 W 9TH ST	211-8
SHADI KAMYAB DDS	639 N 9TH ST	212-9
HOPE CHAPEL SAN PEDRO	461 W 9TH ST	213-9
ARKTIS SKY	617 PILCHARD AVENUE	214-9
HEALTHVIEW INC	921 S BEACON ST	215-9
FARID MAHBOBIAN	940-946 S PACIFIC AVE	217-9
BANK OF AMERICA	951 S PACIFIC AVE	217-9
1X J W RICH INVESTMENTS	1001 S PACIFIC AVE	217-9
<b>PIERCE BROS GARAGE</b>	<b>481 10TH ST</b>	<b>217-9</b>
GRAPHIC TOUCH	1014 S PACIFIC AVE	217-9
CITY OF LOS ANGELES - DEPT OF	1000 S MESA	220-9
SOUTHBAY BARGE INC	2701 SAN RAMON DR	225-7
HARLAN AZPEIPIA	643 W 11TH STREET	226-9
A COMMUNITY OF FRIENDS, LLP	1134 S PACIFIC AVE	231-9
SAM'S AUTO REPAIR	1301 S PACIFIC AVE	233-9
AMLI CORP	1234 W 13TH ST	235-8
SAN PEDRO ARMORY	891 W 13TH ST	236-8
SAN PEDRO ARMORY	891 W 13TH STREET	236-8

## EXECUTIVE SUMMARY

Site	Address	Map ID
SAN PEDRO ARMORY CA ARNG	891 WEST 13TH STREET	236-8
BEACH CITY AUTOMOTIVE	1406 SOUTH PACIFIC AVEN	241-9
IACONOS TUNE UP	1406 S PACIFIC AVE	241-9
<b>PACIFIC BODY SHOP</b>	<b>1437 S PACIFIC AVE</b>	<b>244-9</b>
S & J RACING	1505 S PACIFIC AVE	244-9
BRITISH EUROPEAN AUTO REPAIR	1525 S PACIFIC AVE	244-9
JOES AUTO BODY	1553 SO PACIFIC AVE	244-9
FDIC	1553 S PACIFIC AVE	244-9
<b>Y &amp; S AUTO BODY SHOP</b>	<b>1553 S PACIFIC AVE</b>	<b>244-9</b>
SUNRISE MARINE SERVICES INC	1600 S PACIFIC	244-9
<b>INTERNATIONAL MOTORS</b>	<b>1600 S PACIFIC AVE</b>	<b>244-9</b>
SAN PEDRO TOYOTA SERVICES	1600 SO PACIFIC AVE #E	244-9
<b>PLAZA AUTO REPAIR</b>	<b>1610 S PACIFIC</b>	<b>244-9</b>
EQUILON ENTERPRISES LLC	1631 S PACIFIC	244-9
<b>LAUSD-SAN PEDRO HIGH SCHOOL</b>	<b>1001 W 15TH ST</b>	<b>245-8</b>
LAUSD/ DANA JUNIOR HIGH	1501 CABRILLO AVE	247-8
ABE AND SONS WOOD FINISHING	1526 S CENTRE ST	248-9
<b>LAUSD--FIFTEENTH ST. ELEM</b>	<b>1527 S. MESA ST.</b>	<b>249-9</b>
1X PEACOCK WOODFINISHING	1526 S CENTER	250-9
BETTY CAMERON	1603 S WALKER	252-8
<b>SAN PEDRO CLEANERS</b>	<b>1603 S GAFFEY ST</b>	<b>253-8,9</b>
MOBIL OIL STATION 11-MTD	1637 SO GAFFEY ST	253-8,9
<b>CHARLIES MOBIL</b>	<b>1637 S GAFFEY ST</b>	<b>253-8,9</b>
<b>OCEAN PARADISE CF#3780KR</b>	<b>950 SAMPSON WAY</b>	<b>254-9</b>
CITY OF LA GENERAL SERVICES	1601 S GRAND AVE	255-9
<b>LOS ANGELES FIRE STA 48</b>	<b>1601 S GRAND AVE</b>	<b>255-9</b>
CITY OF L.A. WASTE WATER COLLE	2121 SIGNAL ST	257-9
<b>BP WEST COAST PRODUCTS LLC 096</b>	<b>1706 S GAFFEY ST</b>	<b>258-8,9</b>
BP WEST COAST PRODUCTS LLC 096	1706 S GAFFEY STREET	258-8,9
<b>THRIFTY #184</b>	<b>1706 GAFFEY</b>	<b>258-8,9</b>
PENNZOIL PRODUCTS COMPANY	2220 SIGNAL ST	260-9
<b>BRITISH EUROPEAN AUTO REPAIR</b>	<b>1739 S GAFFEY</b>	<b>261-8,9</b>
CITY OF L.A. DEPT OF WATER & P	18TH ST & AVERILL AVE	264-8
ELIZABETH SANCHEZ	334 W 18TH ST	266-9
SAN PEDRO FISH INSTITUTE INC	2208 SIGNAL PLACE	267-9
<b>PALOS VERDES SHORES MOBILE EST</b>	<b>2275 W 25TH ST</b>	<b>268-7</b>
<b>SOUTH BAY AUTO BODY</b>	<b>1831 S PACIFIC</b>	<b>270-9</b>
M Z MARDESICH, DDS	1919 S PACIFIC AVE	274-9
KINDER MORGAN LIQUID TERMINALS	220 EAST 22ND STREET	276-9
<b>TOXIC TREATMENTS USA</b>	<b>208 E 22ND ST</b>	<b>276-9</b>
<b>JOE &amp; MIKE GOOD AUTO</b>	<b>2010 S PACIFIC AVE</b>	<b>279-9,13</b>
RICHARD HU	2040 S PACIFIC AVE	279-9,13
DIERKS ROGER	2033 CRESCENT	280-9,13
LITTLE SISTERS OF THE POOR	2100 S WESTERN AVE	281-8,12
LITTLE SISTER OF THE POOR	2100 S WESTERN AVE	281-8,12
<b>LITTLE SISTERS OF THE POOR</b>	<b>2100 S WESTERN AVE</b>	<b>281-8,12</b>
LAUSD/ LELAND ST ELEM	2120 LELAND ST	286-8,12
BRANCH OFFICE CF#1250FA	2500 MINER ST	287-9,13
EG&G DYNATREND	111 E 22ND ST	288-9,13
CRESCENT WAREHOUSE COMPANY LTD	111 E 22ND ST	288-9,13
E G & G DYNATREND	111 E 22ND	288-9,13
EG&G DYNATREND AGENT FOR US CU	111 EAST 22ND ST	288-9,13
CRESCENT WAREHOUSE COMPANY LTD	111 EAST 22ND STREET	288-9,13
MEDIMPEX NORTH AMERICA INC/CRE	111 E 22ND ST	288-9,13
ALLAN I LARNER MD	2403 MORAY AVE	290-12
<b>ROBERT BORDEN DMD</b>	<b>2403 MORAY AVE</b>	<b>290-12</b>

## EXECUTIVE SUMMARY

<u>Site</u>	<u>Address</u>	<u>Map ID</u>
<b>UNION OIL PIPELINE,HARBOR STAT</b>	<b>200 WEST 22ND ST</b>	<b>291-13</b>
CITY OF LOS ANGELES - DPW - BU	211 W 22ND ST	291-13
VINKO CARIC	1184 W 22ND ST STE 4	292-12
<b>MARTY'S VILLAGE CLEANERS</b>	<b>2302 S WESTERN AVE</b>	<b>295-12</b>
SAN PEDRO SURF & SPORT	2234-36 SO. PACIFIC AVE	296-13
DICK MYERS	2239 SO. PACIFIC ST.	296-13
FRANK COLORUOTOLO	2248 BARBOUR CT	297-13
<b>CHEVRON STATION NO 97864</b>	<b>1660 W 25TH ST</b>	<b>298-12</b>
CHEVRON 97864	1660 W 25TH ST	298-12
<b>LUCKY CLEANERS</b>	<b>1609 W 25TH STREET</b>	<b>298-12</b>
SOUTH SHORE SERVICE STATION	1603 W 25TH STREET	298-12
SOUTH SHORE UNOCAL	1603 W 25TH ST	298-12
TOSCO CORPORATION STATION #306	1603 W 25TH ST	298-12
BANK OF AMERICA	1602 W 25TH ST	298-12
HOUSEHOLD BANK, FSB	2470 S. WESTERN	298-12
CRITTLER CHIROPRACTIC CENTER	1534 W 25TH ST	298-12
<b>EXXONMOBIL OIL CORP 13106</b>	<b>2490 S WESTERN AVE</b>	<b>298-12</b>
<b>EXXONMOBIL OIL CORPORATION 131</b>	<b>2490 S WESTERN AVE</b>	<b>298-12</b>
EXXONMOBIL OIL CORPORATION 131	2490 S WESTERN AVE	298-12
SOUTH SHORES MOBIL	2490 S WESTERN AVE	298-12
MOBIL OIL STATION 11-MVM	2490 SOUTH WESTERN AVE	298-12
Z BENZ CO INC	2490 S WESTERN AVE	298-12
<b>LAAFB FORT MACARTHUR ANNEX</b>	<b>2400 PACIFIC AVE</b>	<b>303-13</b>
<b>TIERRA VISTA COMMUNITIES</b>	<b>2400 S PACIFIC AVE</b>	<b>303-13</b>
<b>FORT MACARTHUR</b>	<b>2400 PACIFIC AVENUE</b>	<b>303-13</b>
GREG SHARP	741 W 24TH ST	305-12
OCEANIC ASSOCIATION	665 WEST 24TH ST APT 10	306-12,13
PENINSULA PET CLINIC	1450 W 25TH ST	307-12
VONS PHOTO LAB #2162	1440 W 25TH ST	307-12
<b>PACIFIC VIEW DRY CLEANERS</b>	<b>1438 W 25TH ST</b>	<b>307-12</b>
LAUSD/SOUTH SHORES VISUAL	2060 W 35TH ST	308-11
DAVID R MARTIN DDS INC	1418 W 25TH ST	309-12
<b>LA FIRE STATION 101</b>	<b>1414 W 25TH ST</b>	<b>309-12</b>
<b>ANDYS PAINTING CO</b>	<b>1037 W 25TH ST NO 4</b>	<b>311-12</b>
HOLIDAY HARBOR-CABRILLO MARINA	241 WATCHHORN WALK BERT	312-13
RP RICHARDS INC	2604 MARINER	313-12
<b>SAN PEDRO BOAT WORKS</b>	<b>BERTH 44 OUTER HARBOR</b>	<b>314-13</b>
ANDREA TAYLOR	2111-2115 W 37TH ST	315-11
BANC ONE MGMT CO CONSULTANT CO	514 W 26TH ST	316-13
WATCHHORN MARINE CENTER	2800 MINER ST	318-13
<b>SUBOFICIAL CASTILLO</b>	<b>BERTH 57</b>	<b>318-13</b>
SISTERS OF MARY CONVENT	1231 27TH ST	319-12
WHITES POINT PARK	2000 PASEO DEL MAR	320-11
CABRILLO FUEL DOCK LLC	210 WHALER WALK BERTH 3	323-13
<b>MIKES MARINE</b>	<b>210 WHALERS WALK BERTH</b>	<b>323-13</b>
CABRILLO FUEL DOCK	210 WHALER'S WALK BERTH	323-13
VESSEL ASSIST CABRILLO "LONGFI	210 WHALERS WALK	323-13
CITY OF LOS ANGELES - DPW - BU	224 WHALER'S WALK	323-13
SOUTHERN CALIFORNIA HOMES LLC	741 W 29TH ST	325-12,13
MARINA HOTEL	2800 VIA CABRILLO MARIN	326-13
<b>ANGELS GATE CHS</b>	<b>3200 S ALMA ST</b>	<b>328-12</b>
SOUTH REGION HIGH SCHOOL #15	3200 ALMA ST	328-12
LELAND VESSOP	751 W 31ST	330-12,13
LAAFB/WHITE POINT	1600 PASEO DEL MAR	333-12
HELEN COOPER	3717 JACKSTADT ST	334-12
LAUSD/ POINT FERMIN ELEMENTARY	3333 KERCKHOFF AVE	337-13

## EXECUTIVE SUMMARY

<u>Site</u>	<u>Address</u>	<u>Map ID</u>
<b>LAUSD POINT FERMIN ELEM SCHOOL</b>	<b>3333 KERCKHOFF AVE</b>	<b>337-13</b>
CITY OF LOS ANGELES - RECREATI	3351 S GAFFEY ST	338-12
LAUSD/ SAN PEDRO-WILM SKILLS	920 W 36TH STREET BLDG	339-12
LAAFB/UPPER RESERVATION	920 W 36TH ST BLDG 950	339-12
<b>SAN PEDRO SKILLS CENTER</b>	<b>920 WEST 36TH ST</b>	<b>339-12</b>
ELLEN KALLEN	1171 PASEO DEL MAR	341-12
LAAFB/UPPER RESERVATION	3601 GAFFEY	342-12,13
UNIVERISTY OF CALIFORNIA, DAVI	3601 S GAFFEY ST	342-12,13
CITY OF LOS ANGELES - DPR	3601 S GAFFEY ST	342-12,13
CITY OF LOS ANGELES-DEPT OF RE	3601 GAFFEY ST	342-12,13
CITY OF LA/DEPT OF RECREATION	3601 S GAFFEY ST	342-12,13
<b>CABRILLO MARINE MUSEUM</b>	<b>3720 STEPHEN WHITE DR</b>	<b>343-13</b>
CABRILLO MARINE MUSEUM	3720 STEPHEN M WHITE DR	343-13
JANE BAILEY	3924 BLUFF PLACE	346-13
POINT FERMIN LIGHTHOUSE	805 PASEO DEL MAR	347-12

EMI: Toxics and criteria pollutant emissions data collected by the ARB and local air pollution agencies

A review of the EMI list, as provided by EDR, and dated 12/31/2008 has revealed that there are 77 EMI sites within the searched area.

<u>Site</u>	<u>Address</u>	<u>Map ID</u>
GREEN HILLS MEM PARK	27501 S WESTERN AVE	9-2
<b>LA CO. SANITATION DISTRICT</b>	<b>AVENIDA APRENDA/WESTERN</b>	<b>14-2,5</b>
<b>BRAY TERMINAL</b>	<b>2115 N GAFFEY ST</b>	<b>22-5</b>
<b>AMERIGAS PROPANE L.P.</b>	<b>2110 N GAFFEY ST</b>	<b>22-5</b>
<b>GAFFEY STREET VENTURES</b>	<b>2100 N GAFFEY ST</b>	<b>22-5</b>
GOYA CLEANERS, ONNIK GARO COSK	28025 WESTERN AV	25-5
GARDEN VILLAGE CLEANERS	28144 S. WESTERN AVE	28-5
RANCHO CLEANERS, HARRY LEE DBA	28374 S WESTERN	33-5
<b>LAUSD/ TAPER AVE ELEM</b>	<b>1824 TAPER AVE</b>	<b>36-5</b>
<b>TARGET CORP</b>	<b>1701 N GAFFEY ST</b>	<b>43-5,6</b>
DI CARLOS BAKING CO	1701 N. GAFFEY ST.	43-5,6
Y & S AUTO BODY SHOP	1441 NORTH GAFFEY STREE	51-5,6
<b>WESTERN FUEL OIL CO</b>	<b>BERTH 120</b>	<b>52-6</b>
GATX RAIL CORP	BERTH 70, SIGNAL ST.	52-6
<b>KINDER MORGAN ENERGY PARTNERS</b>	<b>1363 N GAFFEY ST</b>	<b>55-5,6</b>
FANTASTIC CAFE	1235 N GAFFEY STREET	59-5,6
BAY AREA AUTO	751 BATTERY STREET	59-5
COPY CRAFT, MARGARET R. BAYER	790 BASIN ST,4B	61-5
COPPA WOODWORKING INC	1231 PARAISO AVE	61-5
HILLSIDE CLEANERS, CHARLES BER	29117 SO. WESTERN AVE.	64-5
HILLSIDE CLEANERS	29117 SO. WESTERN AVE.	64-5
<b>MASTER CLEANERS</b>	<b>1076 N WESTERN AVE</b>	<b>64-5</b>
BON TON CLEANERS	28941 SO. WESTERN AVE.	64-5
BON TON CLEANERS, SEUNG D. PAR	28901 S WESTERN AVE #30	64-5
<b>S P A B INC DBA SAN PEDRO AUTO</b>	<b>789 BATTERY ST</b>	<b>66-5</b>
LARRY'S BURGERS, E KOTSIFIS/G	639 CHANNEL STREET	70-5,6
<b>WEST COAST AEROSPACE INC</b>	<b>812 MIRAFLORES ST</b>	<b>77-5</b>
HARTMARK FINE WOOD DESIGNS	793 MIRAFLORES	77-5
MASTER CLEANERS, RICHARD J. KI	1018 N WESTERN AVE	79-5
FAST TACO	980 NORTH WESTERN AVENU	79-5
<b>LAUSD/HARBOR OCCUPATIONAL CENT</b>	<b>740 N PACIFIC AVE</b>	<b>86-6</b>

## EXECUTIVE SUMMARY

Site	Address	Map ID
LA UNI SCH DIST, HARBOR OCCUPA	740 NORTH PACIFIC AV	86-6
<b>CHEVRON U.S.A. INC, MARINE TER</b>	<b>1510 N SWINFORD ST</b>	<b>89-6</b>
<b>TODD SHIPYARD</b>	<b>710 FRONT</b>	<b>90-6</b>
LA CITY BUREAU OF ENGINEERING	675 FRONT ST	90-6
MICHEAL'S PARK PLAZA CLEANERS	804 N WESTERN AVE	92-5
LA CITY, DEPT OF GEN SERVICES	501 N MESA	111-6
LA UNI SCH DIST, BARTON HILL E	423 N PACIFIC AV	114-6,9
<b>LEONARD/ANGELKA BARIC/VICTOR/N</b>	<b>340 N PACIFIC AVE</b>	<b>120-6,9</b>
OCEAN PARK CLEANERS	114 N GAFFEY ST	132-8,9
BUDS AUTO SERV	120 N. PACIFIC AVE.	134-9
SPIRO'S	240 SOUTH PACIFIC AVENU	145-9
<b>HARBOR ADMINISTRATION BUILDING</b>	<b>425 S PALOS VERDES ST</b>	<b>155-9</b>
<b>RICHARD'S CLEANERS</b>	<b>538 W 5TH ST</b>	<b>158-9</b>
<b>REGAL CLEANERS</b>	<b>519 S GAFFEY ST</b>	<b>159-8,9</b>
<b>PACIFIC BELL</b>	<b>425 W 5TH ST</b>	<b>163-9</b>
<b>BASF CORP AT REFINERS MKTG CO</b>	<b>100 S SEASIDE AVE BASF</b>	<b>164-9</b>
RADISSON LOS ANGELES HARBOR HO	601 S PALOS VERDES ST	165-9
<b>BEACON STREET HOTEL ASSOCIATIO</b>	<b>601 S PALOS VERDES ST</b>	<b>165-9</b>
<b>SOUTH BAY BODY SHOP</b>	<b>546 W 6TH ST</b>	<b>171-9</b>
SENFUKU RESTAURANT, H KIKUCHI	380 W 6TH STREET	173-9
<b>SAN PEDRO PENINSULA HOSPITAL</b>	<b>1300 W 7TH ST</b>	<b>185-8</b>
J TRANIS	584 9TH ST.	207-9
<b>ANCON MARINE INC</b>	<b>1010 SOUTH CABRILLO AVE</b>	<b>222-8</b>
EL PASO CANTINA	750 SAMPSON WAY, BERTH	232-9
<b>PACIFIC BODY SHOP</b>	<b>1437 S PACIFIC AVE</b>	<b>244-9</b>
JOE'S AUTO BODY SHOP,JOSE GONZ	1553 SO. PACIFIC AVE	244-9
<b>LAUSD-SAN PEDRO HIGH SCHOOL</b>	<b>1001 W 15TH ST</b>	<b>245-8</b>
PEACOCK WOOD FINISHING	1526 S CENTRE ST, STE 1	248-9
<b>LAUSD--FIFTEENTH ST. ELEM</b>	<b>1527 S. MESA ST.</b>	<b>249-9</b>
<b>SAN PEDRO CLEANERS</b>	<b>1603 S GAFFEY ST</b>	<b>253-8,9</b>
GREEN ONION MEXICAN RESTAURANT	1622 S GAFFEY	253-8,9
<b>HARBOR FUMIGATION INC</b>	<b>2200 MINER ST</b>	<b>259-9</b>
<b>AG-FUME SERVICE INC</b>	<b>2200 MINER ST</b>	<b>259-9</b>
SOUTH BAY AUTO BODY	1831 SO. PACIFIC AVE.	270-9
LOS ANGELES DEPT OF WATER AND	1603 W. MORSE DR.	271-8
<b>UNION OIL PIPELINE,HARBOR STAT</b>	<b>200 WEST 22ND ST</b>	<b>291-13</b>
<b>HARBOR STATION</b>	<b>200 W 22ND ST</b>	<b>291-13</b>
<b>MARTY'S VILLAGE CLEANERS</b>	<b>2302 S WESTERN AVE</b>	<b>295-12</b>
FANTASTIC CAFE	1633 25TH ST	298-12
LUCKY CLEANERS,HAE HYWN LEE DB	1609 W 25TH ST	298-12
<b>LUCKY CLEANERS</b>	<b>1609 W 25TH STREET</b>	<b>298-12</b>
<b>LAAFB FORT MACARTHUR ANNEX</b>	<b>2400 PACIFIC AVE</b>	<b>303-13</b>
<b>PACIFIC VIEW DRY CLEANERS</b>	<b>1438 W 25TH ST</b>	<b>307-12</b>
<b>SAN PEDRO BOAT WORKS</b>	<b>BERTH 44 OUTER HARBOR</b>	<b>314-13</b>
LA CO SANITATION DISTRICT	3600 S WESTERN AVE	321-11
<b>CABRILLO MARINE MUSEUM</b>	<b>3720 STEPHEN WHITE DR</b>	<b>343-13</b>

## EXECUTIVE SUMMARY

ENVIROSTOR: The Department of Toxic Substances Control's (DTSC's) Site Mitigation and Brownfields Reuse Program's (SMBRP's) EnviroStor database identifies sites that have known contamination or sites for which there may be reasons to investigate further. The database includes the following site types: Federal Superfund sites (National Priorities List (NPL)); State Response, including Military Facilities and State Superfund; Voluntary Cleanup; and School sites. EnviroStor provides similar information to the information that was available in CalSites, and provides additional site information, including, but not limited to, identification of formerly-contaminated properties that have been released for reuse, properties where environmental deed restrictions have been recorded to prevent inappropriate land uses, and risk characterization information that is used to assess potential impacts to public health and the environment at contaminated sites.

A review of the ENVIROSTOR list, as provided by EDR, and dated 11/08/2010 has revealed that there are 20 ENVIROSTOR sites within the searched area.

<u>Site</u>	<u>Address</u>	<u>Map ID</u>
GREEN HILLS MEMORIAL PARK #2 Status: Refer: 1248 Local Agency	27501 W. WESTERN AVE.	5-2
<b>WESTERN FUEL OIL CO</b> Status: * Inactive	<b>2100 N GAFFEY</b>	<b>22-5</b>
RANCHO CLEANERS Status: Refer: 1248 Local Agency	28374 S. WESTERN AVENUE	33-5
<b>LOS ANGELES HARBOR TERMINAL TA KINDER MORGAN - GAFFEY STREET</b> Status: Active	<b>1900 WILMINGTON-SAN PED 1313/1363 N GAFFEY STRE</b>	<b>52-6 59-5,6</b>
<b>TODD SHIPYARD</b> Status: Inactive - Needs Evaluation	<b>710 FRONT</b>	<b>90-6</b>
<b>PLAZA AUTOMOTIVE CENTER</b> Status: Inactive - Needs Evaluation	<b>505 N PACIFIC AVE</b>	<b>107-6</b>
<b>EDISON/SAN PEDRO MGP</b> Status: No Further Action	<b>SANTA CRUZ ST. CENTREST</b>	<b>128-9</b>
OCEAN PARK CLEANERS Status: Refer: 1248 Local Agency	114 N. GAFFEY STREET	132-8,9
<b>PORT OF LOS ANGELES BERTH 174</b> Status: Active	<b>425 SOUTH PALOS VERDES</b>	<b>155-9</b>
<b>RICHARDS CLEANERS</b> Status: Active	<b>538 WEST 5TH STREET</b>	<b>158-9</b>
<b>CABRILLO ELEMENTARY SCHOOL-PLY</b> Status: Inactive - Needs Evaluation	<b>732 SOUTH CABRILLO</b>	<b>195-8</b>
AUTO BODY SHOP Status: Inactive - Needs Evaluation	1505-1555 SOUTH PACIFIC	244-9
<b>15TH STREET ELEMENTARY SCHOOL</b> Status: Certified	<b>PACIFIC AVENUE/WEST 16T</b>	<b>244-9</b>
<b>GATX ANNEX TERMINAL-SAN PEDRO</b> Status: Certified / Operation & Maintenance	<b>208 EAST 22ND STREET</b>	<b>276-9</b>
<b>LUCKY DRY CLEANERS</b> Status: Certified / Operation & Maintenance	<b>1609 W 25TH ST</b>	<b>298-12</b>
PACIFIC VIEW INVESTMENTS Status: Refer: 1248 Local Agency	1415-1460 W. 25TH ST.	310-12
<b>SAN PEDRO BOAT WORKS</b> Status: Active	<b>BERTH 44 OUTER HARBOR</b>	<b>314-13</b>
<b>FORT MACARTHUR LOWER &amp; MIDDLE</b> Status: Inactive - Needs Evaluation	<b>2901 ARTHUR MACARTHUR R</b>	<b>322-13</b>

## EXECUTIVE SUMMARY

<u>Site</u>	<u>Address</u>	<u>Map ID</u>
<b>SOUTH REGION HIGH SCHOOL NO. 1</b> Status: Active	<b>3200 SOUTH ALMA STREET</b>	<b>328-12</b>

HAULERS: A listing of registered waste tire haulers.

A review of the HAULERS list, as provided by EDR, and dated 11/22/2010 has revealed that there is 1 HAULERS site within the searched area.

<u>Site</u>	<u>Address</u>	<u>Map ID</u>
R & H AUTO CARE, INC.	29701 SOUTH WESTERN AVE	103-5

HWT: A listing of hazardous waste transporters. In California, unless specifically exempted, it is unlawful for any person to transport hazardous wastes unless the person holds a valid registration issued by DTSC. A hazardous waste transporter registration is valid for one year and is assigned a unique registration number.

A review of the HWT list, as provided by EDR, and dated 10/19/2010 has revealed that there are 2 HWT sites within the searched area.

<u>Site</u>	<u>Address</u>	<u>Map ID</u>
SANDOVAL TRUCKING	201 NORTH BEACON STREET	126-9
SOUTHBAY INDUSTRIAL SERVICES I	2701 SAN RAMON DRIVE	225-7

HWP: Detailed information on permitted hazardous waste facilities and corrective action ("cleanups") tracked in EnviroStor.

A review of the HWP list, as provided by EDR, and dated 08/09/2010 has revealed that there is 1 HWP site within the searched area.

<u>Site</u>	<u>Address</u>	<u>Map ID</u>
<b>WESTERN FUEL OIL CO</b>	<b>2100 N GAFFEY</b>	<b>22-5</b>

### EDR PROPRIETARY RECORDS

Manufactured Gas Plants: The EDR Proprietary Manufactured Gas Plant Database includes records of coal gas plants (manufactured gas plants) compiled by EDR's researchers. Manufactured gas sites were used in the United States from the 1800's to 1950's to produce a gas that could be distributed and used as fuel. These plants used whale oil, rosin, coal, or a mixture of coal, oil, and water that also produced a significant amount of waste. Many of the byproducts of the gas production, such as coal tar (oily waste containing volatile and non-volatile chemicals), sludges, oils and other compounds are potentially hazardous to human health and the environment. The byproduct from this process was frequently disposed of directly at the plant site and can remain or spread slowly, serving as a continuous source of soil and groundwater contamination.

A review of the Manufactured Gas Plants list, as provided by EDR, has revealed that there is 1



## EXECUTIVE SUMMARY

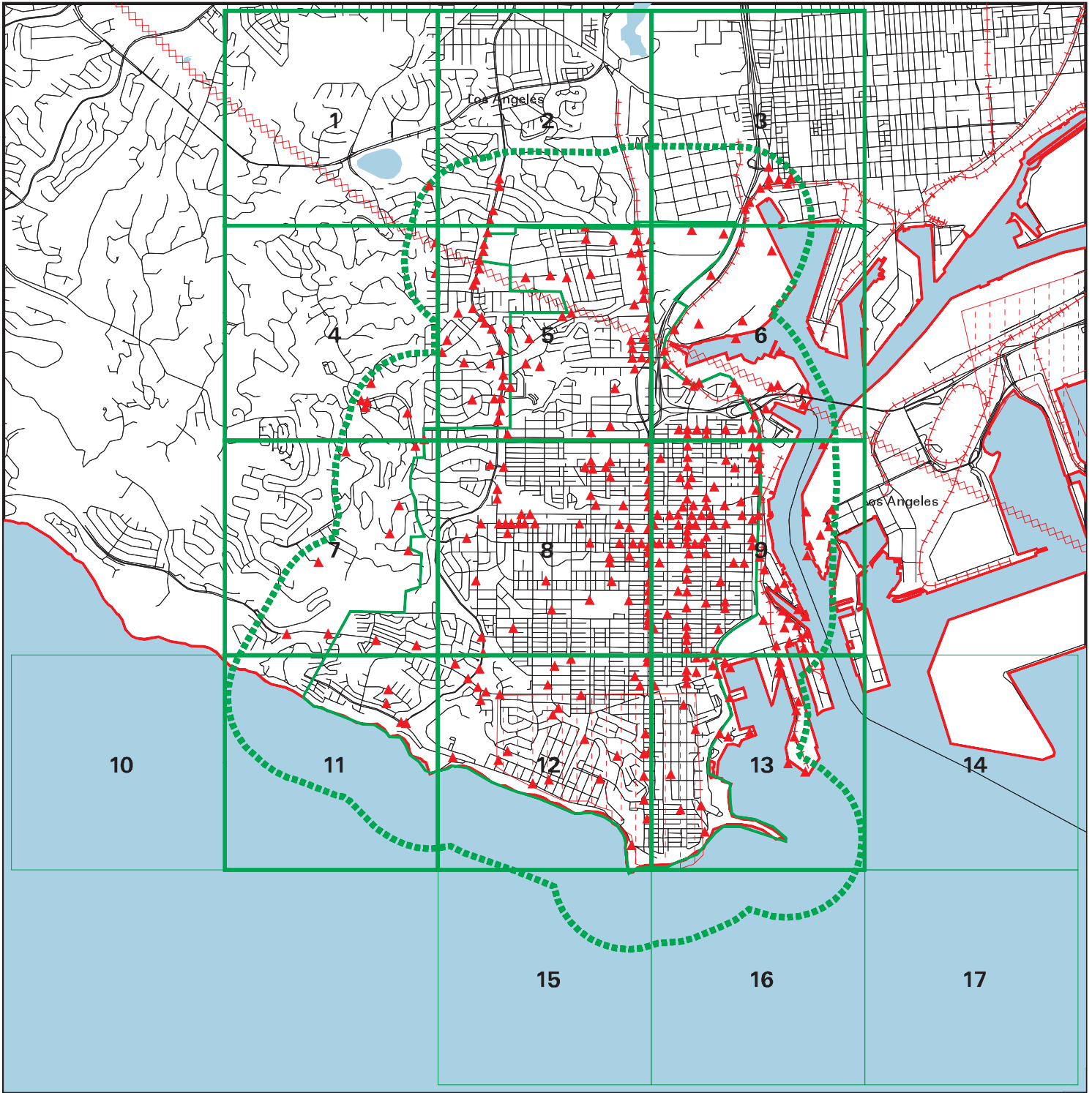
Manufactured Gas Plants site within the searched area.

<u>Site</u>	<u>Address</u>	<u>Map ID</u>
EDISON/SAN PEDRO MGP	SANTA CRUZ, CENTRE AND	135-9

## **EXECUTIVE SUMMARY**

Please refer to the end of the findings report for unmapped orphan sites due to poor or inadequate address information.

# Key Map

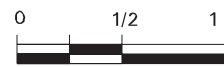


## EDR DataMap® - Environmental Atlas

### San Pedro NCP

#### Legend

- |               |                |                         |                   |              |
|---------------|----------------|-------------------------|-------------------|--------------|
| Roads         | Waterways      | Powerlines              | Water             | Listed Sites |
| Major Roads   | Railroads      | Pipelines               | Superfund Sites   |              |
| Contour Lines | Study Boundary | Fault Lines             | Federal DOD Sites |              |
|               |                | Indian Reservations BIA |                   |              |



Scale in Miles

